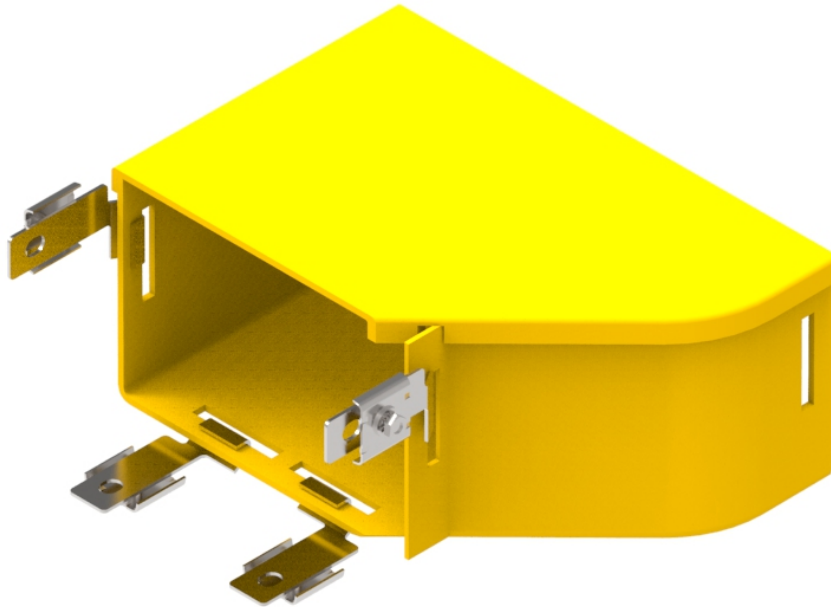


Part Number: **TC1279-150KIT**
Description: **RIGHT HAND ADAPTOR, 220mm TO
6" YELLOW DUCT TO ADC DUCT**



Use / Application:

This right hand adaptor allows interconnection between 220mm YELLOWDUCT and 6" ADC ducting. As viewed from the 6" side, the 220mm end is offset to the right. It comes complete with adaptor brackets to firmly fix the 6" ADC ducting and uses either: the standard 220mm joiner (Part No: TC1279-25) or 220mm slotless joiner (Part No: TC1279-250A), to connect to YELLOWDUCT 220mm ducting.

Benefits & Features:

- Includes cover
- Clips straight into joiner
- Tough, fire retardant material
- Includes adaptor brackets & nuts to fit ADC 6" duct
- Joiners: either standard joiner (Part No: TC1279-25) or a slotless joiner (Part No: TC1279-250A); available separately
- Purchase by the unit

Technical Attributes:

Dimensions	160mm (W) x 105mm (H) x 230mm (D)
Weight	400g
Materials	Fire retardant plastic, Halogen free, UL94-V0 rated