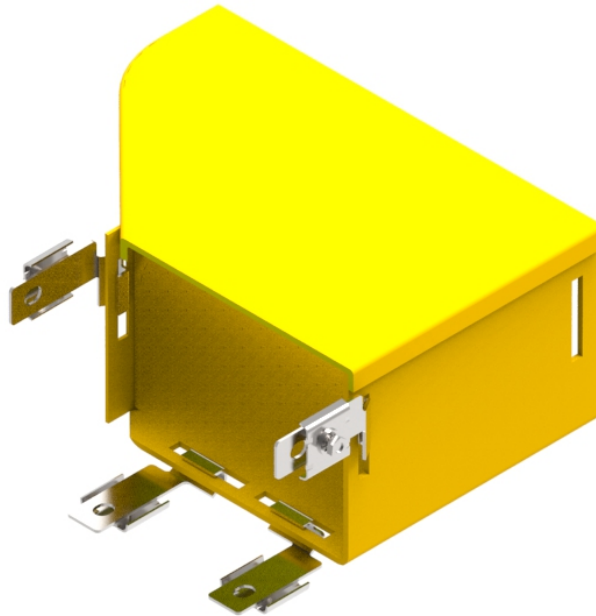




Part Number: **TC1279-149KIT**

Description: **LEFT HAND ADAPTOR, 220mm TO  
6" YELLOW DUCT TO ADC DUCT**



## Use / Application:

This left hand adapter allows interconnection between 220mm YELLOW DUCT and 6" ADC ducting. As viewed from the 6" side the 220mm end is offset to the left. It comes complete with adaptor brackets to firmly fix the 6" ADC ducting and uses either: the standard 220mm joiner (Part No: TC1279-25) or the 220mm slotless joiner (Part No: TC1279-250A), to connect to YELLOW DUCT 220mm ducting.

## Benefits & Features:

- Includes cover
- Clips straight into joiner
- Tough, fire retardant material
- Includes adaptor brackets & nuts to fit ADC 6" duct
- Joiners: either standard joiner (Part No: TC1279-25) or a slotless joiner (Part No: TC1279-250A); available separately
- Purchase by the unit

## Technical Attributes:

<b>Dimensions</b>	160mm (W) x 105mm (H) x 230mm (D)
<b>Weight</b>	400 g
<b>Materials</b>	Fire retardant plastic, Halogen free, UL94-V0 rated