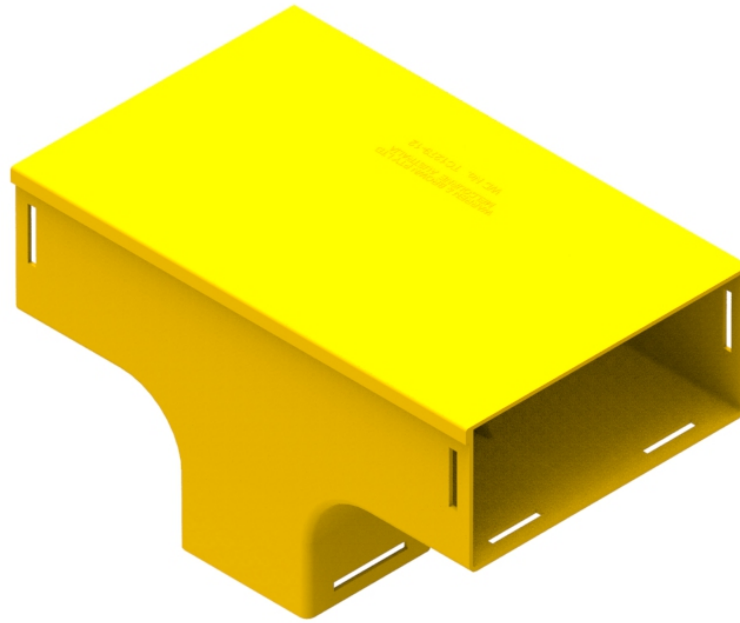


Part Number: **TC1279-11A**
 Description: **INTRA SUITE ENTRY ASSEMBLY,
 220mm DUCT**



Use/Application:

The entry suite is basically a 100mm vertical drop off point in a 220mm horizontal duct system. This is usually installed where a large number of optical fibre cords are to be dropped off below. eg. in optical fibre distribution frames. It provides free flow for the ongoing fibres and strain relief for those exiting down the 100mm vertical section. There are two 220mm horizontal outlets, which use standard joiners (Part No: TC1279-25, Telstra No: 035300515) or a slotless joiner (Part No: TC1279-250A) and a 100mm vertical outlet that uses a standard joiner (Part No: TC1279-27, Telstra No: 035300514) or a slotless joiner (Part No: TC1279-248A). These are available separately.

Benefits & Features:

- Includes cover (Part No: TC 1279-11D)
- Clips straight into joiner
- Tough, fire retardant material
- Joiners (Part No's: TC1279-25 & TC1279-27, Telstra No's: 035300515 & 035300514 or TC1279-250A & TC1279-248A); available separately
- Purchase by the unit

Technical Attributes:

| | |
|-------------------|---|
| Dimensions | 370mm (W) x 205mm (H) x 232mm (D) |
| Weight | 935g |
| Materials | Fire retardant plastic, Halogen free, UL94-V0 rated |