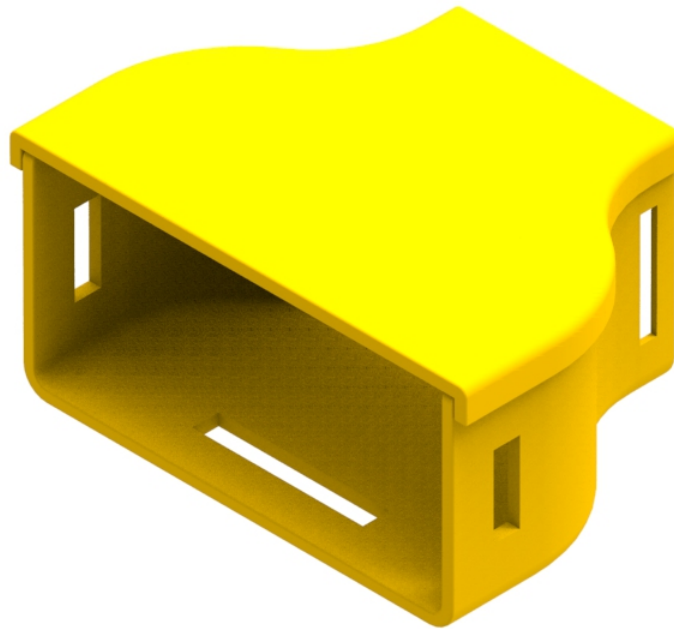




Part Number: **TC1279-238A**

Description: **ADAPTOR ASSEMBLY, EXTERNAL LID, 100mm x 50mm
DUCT TO 50mm x 50mm DUCT**



Use / Application:

The 100 x 50mm to 50 x 50mm adaptor is used to provide an in line adaptor between 100 x 50mm and 50 x 50mm straight ducting and components. The adaptor requires a joiner at both interfaces (100 x 50mm is Part No: TC1279-226 and 50 x 50mm is Part No: TC1279-73). This produces smooth & strong joints. Joiners, available separately.

Benefits & Features:

- Includes cover , and clips straight into joiner
- Tough, fire retardant material
- Joiners (Part No: TC1279-226 & TC1279-73); available separately
- Purchase by the unit

Technical Attributes:

Dimensions	82mm (W) x 55mm (H) x 106mm (D)
Weight	73g
Materials	Fire retardant plastic, Halogen free, UL94-V0 rated