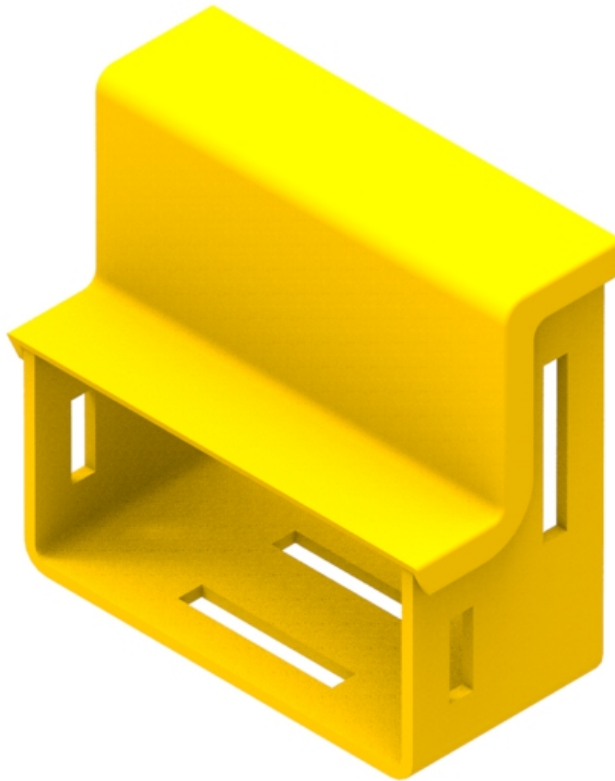




Part Number: **TC1279-240A**

Description: **ADAPTOR ASSEMBLY, EXTERNAL LID,  
100mm x 100mm DUCT TO 100mm x 50mm DUCT**



## Use / Application:

The 100 x 100mm to 100 x 50mm adaptor is used to provide an in-line adaptor between 100 x 100mm duct and 100 x 50mm straight ducting and components. The adaptor requires a joiner at both interfaces (100 x 50mm is Part No.TC1279-226 and 100 x 100mm is Part No TC1279-27 or TC1279-248A). This produces smooth & strong joints. Joiners, available separately.

## Benefits & Features:

- Includes cover, and clips straight into joiner
- Tough fire retardant material
- Joiners (Part No's: TC1279-226, TC1279-27 or TC1279-248A); available separately
- Purchase by the unit

## Technical Attributes:

<b>Dimensions</b>	52mm (W) x 105mm (H) x 110mm (D)
<b>Weight</b>	40g
<b>Materials</b>	Fire retardant plastic, Halogen free, UL94-VO rated