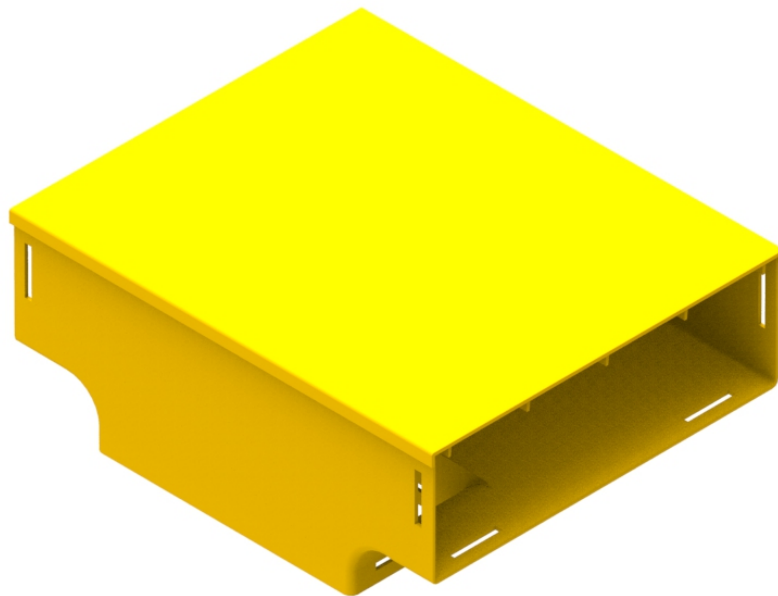




Part Number: **TC1279-277A**  
Description: **INTRA SUITE ENTRY ASSEMBLY,  
300mm x 100mm DUCT**



Also available without the lid, as straight duct (Part No: TC1279-277)

## Use / Application:

The entry suite is basically a 220mm vertical drop off point in a 300mm horizontal duct system. This is usually installed where a large number of optical fibre cords are to be dropped off below: eg. in optical fibre distribution frames. It provides free flow for the ongoing fibres and strain relief for those exiting down the 220mm vertical section. There are two 300mm horizontal outlets, which use slotless joiners (Part No: TC1279-287A) and a 220mm vertical outlet that uses a slotless joiner (Part No: TC1279-250A). Joiners: available separately.

## Benefits & Features:

- Includes cover (Part No: TC 1279-278)
- Clips straight into joiner
- Ribs included for extra strength
- Tough, fire retardant material
- Joiners: (Part No's: TC1279-250A & TC1279-287A), available separately
- Also available without cover (Part No: TC1279-277)
- Purchase by the unit

## Technical Attributes:

<b>Dimensions</b>	370mm (W) x 150mm (H) x 312mm (D)
<b>Weight</b>	1175g [all up]; Lid = 502g
<b>Materials</b>	Fire retardant plastic, Halogen free, UL94-V0 rated