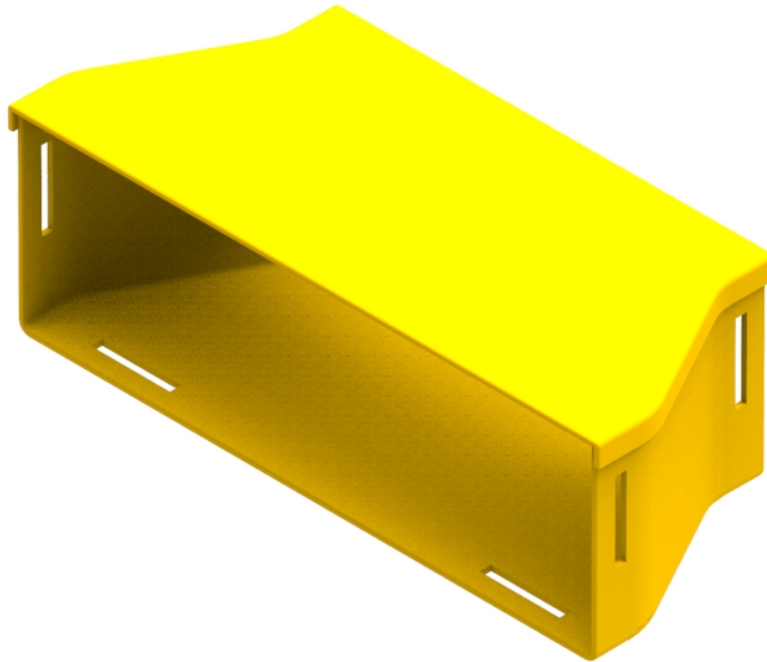




Part Number: **TC1279-281A**  
Description: **ADAPTOR ASSEMBLY,  
300mm TO 220mm DUCT**



Also available without the lid, as straight duct (Part No: TC1279-281)

## Use / Application:

The 300-220mm adaptor is used to provide a reducing connection between standard 300mm and 220mm straight ducting or tee pieces. The adaptor requires slotless joiners at the 300mm & 220mm interfaces (Part No's: TC1279- 287A & TC1279-250A). Each connection produces smooth & strong joints. These are available separately.

## Benefits & Features:

- Includes cover (Part No: TC 1279-282)
- Clips straight into joiner
- Ribs included for extra strength
- Tough, fire retardant material
- Joiners (Part No's: TC1279-287A & TC1279-250A); available separately
- Also available without cover, as Part No: TC1279-281
- Purchase by the unit

## Technical Attributes:

<b>Dimensions</b>	311mm (W) x 113mm (H) x 133mm (D)
<b>Weight</b>	345g
<b>Materials</b>	Fire retardant plastic, Halogen free, UL94-V0 rated