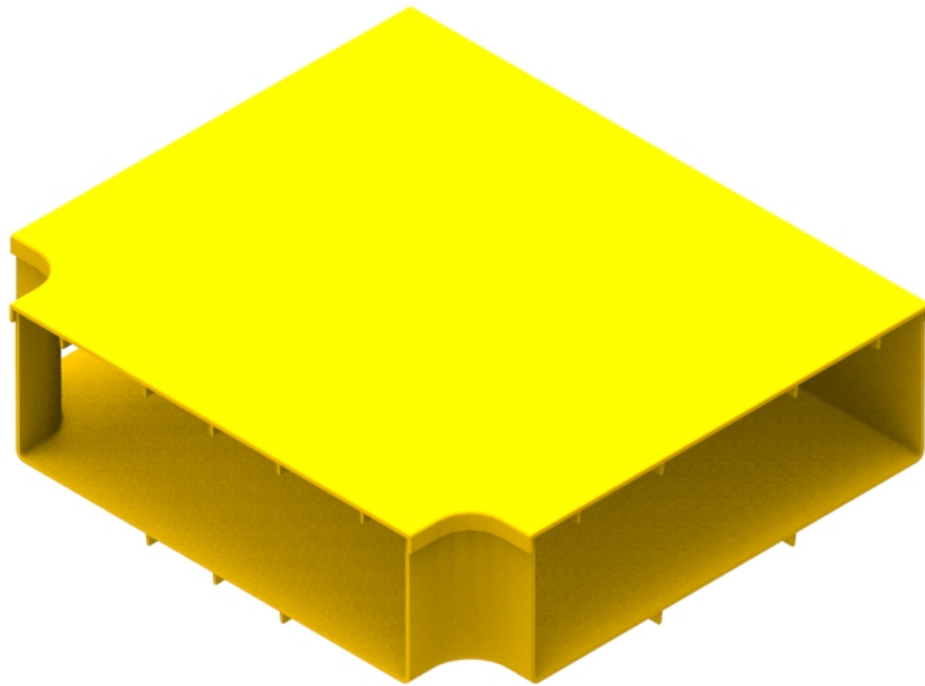


Part Number: **TC1279-279A**
 Description: **TEE ASSEMBLY,
 300mm x 100mm DUCT**



Also available without the lid, as straight duct (Part No: TC1279-279)

Use / Application:

This tee is used to provide a tee intersection with standard 300mm straight ducting. It requires a slotless joiner (Part No: TC1279-287A) at each interface, which provides a smooth & strong joint. Joiners, available separately.

Technical Attributes:

- Includes cover (Part No: TC1279-280)
- Clips straight into slotless joiner (Part No: TC1279-287A); available separately
- Ribs included for extra strength
- Tough, fire retardant material
- Also available without cover; as Part No: TC 1279-279
- Purchase by the unit

Technical Attributes:

Dimensions	405mm (W) x 114mm (H) x 358mm (D)
Weight	1220g
Materials	Fire retardant plastic, Halogen free, UL94-V0 rated