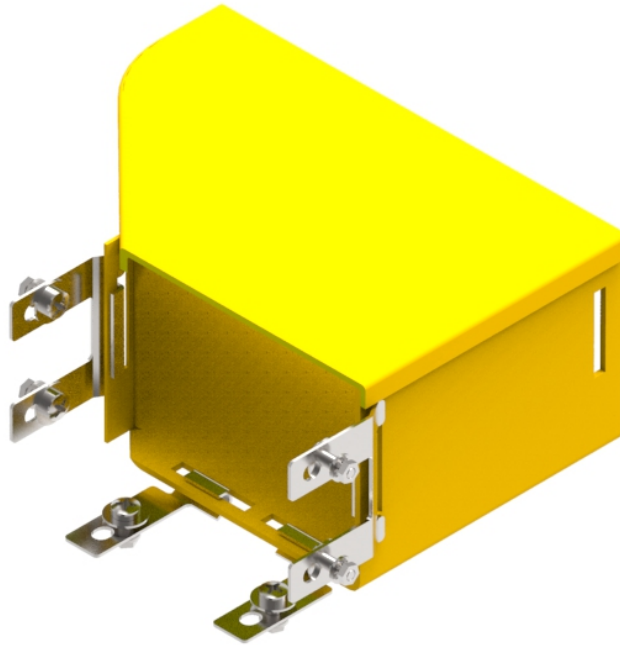


Part Number: **TC1279-487KIT**
 Description: **LEFT HAND ADAPTOR, 220mm x 100mm
 YELLOW DUCT TO 6" X 4" PANDUIT DUCT**



Use / Application:

This left hand adapter allows interconnection between 220 x 100mm Yellow Duct and 6 x 4" Panduit ducting. As viewed from the 220mm side the 6" end is offset to the left. It comes complete with adaptor brackets to firmly fix the 6" Panduit ducting and uses either: the standard 220mm joiner (Part No: TC1279-25) or the 220mm slotless joiner (Part No: TC1279-250A), to connect to Yellow Duct 100mm ducting.

Technical Attributes:

- Includes cover
- Clips straight into joiner, (Part No: TC1279-25 or Part No: TC1279-250A)
- Tough, fire retardant material
- Includes adaptor brackets & nuts to fit Panduit 6" x 4" duct
- Joiners: either standard joiner (Part No: TC1279-25) or a slotless joiner (Part No: TC1279-250A); available separately
- Purchase by the unit

Technical Attributes:

Dimensions	220/232mm (W) (Adaptor/lid) x 105mm (H) x 150mm (D)
Weight	380g
Materials	Fire retardant plastic, Halogen free, UL94-V0 rated