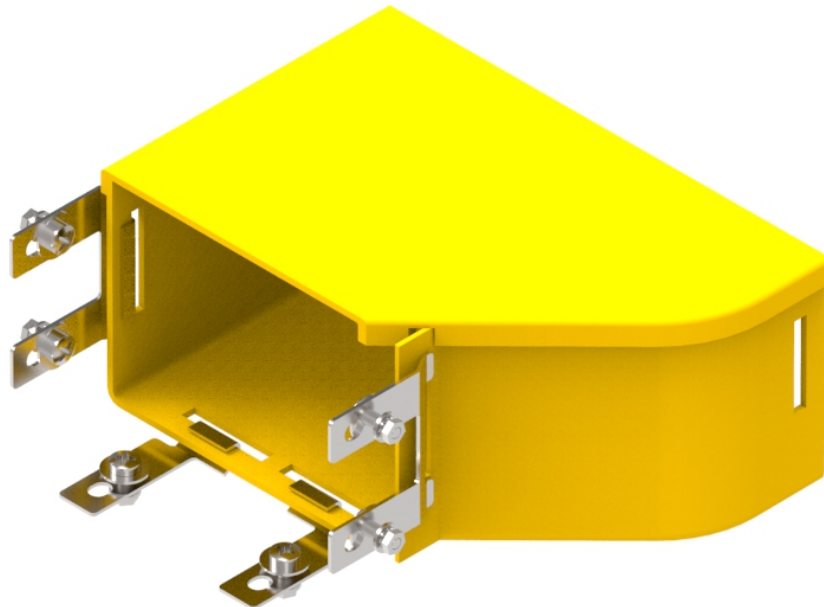


Part Number: **TC1279-486KIT**
 Description: **RIGHT HAND ADAPTOR, 220mm x 100mm
 YELLOW DUCT TO 6" X 4" PANDUIT DUCT**



Use / Application:

This right hand adaptor allows interconnection between 220mm Yellow Duct and 6" Panduit ducting. As viewed from the 6" side the 100mm end is offset to the right. It comes complete with adaptor brackets to firmly fix the 6" Panduit ducting and uses either: the standard 220mm joiner (Part No: TC1279-25) or 220mm slotless joiner (Part No: TC1279-250A) - to connect to Yellow Duct 220mm ducting.

Technical Attributes:

- Includes cover
- Clips straight into joiner (Part No's: TC1279 - 25 or TC1279 - 250A)
- Tough, fire retardant material
- Includes adaptor brackets & nuts to fit Panduit 6" duct
- Joiners- either: the standard joiner (Part No: TC1279 - 25) or slotless joiner (Part No: TC1279 - 250A); available separately
- Purchase by the unit

Technical Attributes:

Dimensions	220/232mm (W) (Adaptor/lid) x 105mm (H) x 150mm (D)
Weight	380g
Materials	Fire retardant plastic, Halogen free, UL94-V0 rated