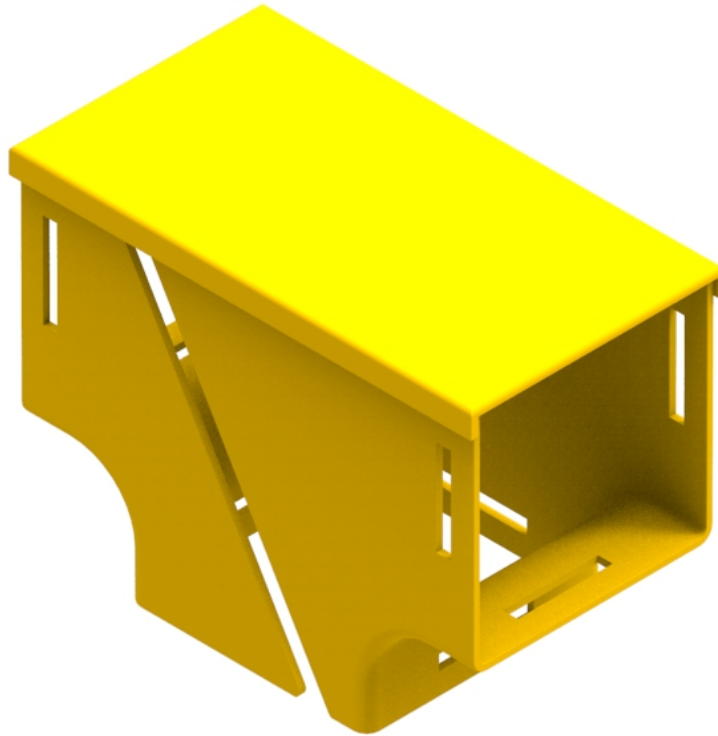




Part Number: **TC1279-63R**
Description: **INTRA SUITE ENTRY ASSEMBLY,
RETROFIT, 100mm DUCT**



Use / Application:

The entry suite is basically a 100mm vertical drop off point in a 100mm horizontal duct system. This is usually installed where a large number of optical fibre cords are to be dropped off below, e.g. in optical fibre distribution frames. It provides free flow for the ongoing fibres and strain relief for those exiting down the 100mm vertical section. There are two 100mm horizontal outlets, and a 100mm vertical outlet which use either: standard joiners (Part No: TC1279-27, Telstra No: 035300514) or a slotless joiner (Part No: TC1279-248A). These are available separately. The entry suite allows for easy retrofitting of fibres into an existing assembly, as it has a slot on one side.

Benefits & Features:

- Includes cover (Part No: TC 1279-229)
- allows for easy retrofitting of fibres into an existing assembly, as it has a slot on one side
- Clips straight into joiner
- Tough, fire retardant material
- Joiners (Part No: TC1279-27, Telstra No: 035300514 or TC1279-248A); available separately
- Purchase by the unit

Technical Attributes:

Dimensions	205mm (W) x 150mm (H) x 113mm (D)
Weight	306g
Materials	Fire retardant plastic, Halogen free, UL94-VO rated