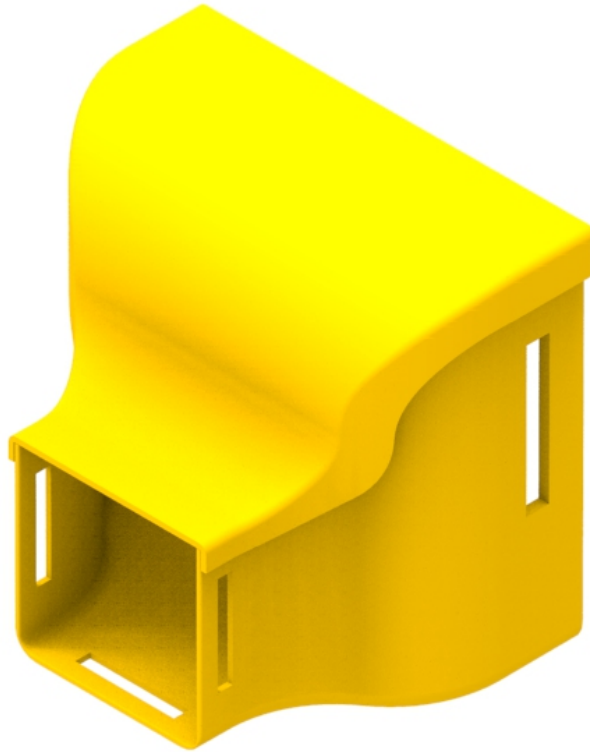




Part Number: **TC1279-91A**
Description: **ADAPTER ASSEMBLY,
100mm to 50mm DUCT**



Use / Application:

The 100mm to 50mm adaptor is used to provide a reducing connection between standard 100mm and 50mm straight ducting, tee pieces or other standard duct components. The adaptor requires standard joiners (Part No's: TC1279-27 & TC1279-73, Telstra No: 035300514 & 035300788), or the 100mm slotless joiner (Part No: TC1279-248A) at the 100mm & 50mm interfaces, which produces smooth & strong joints. The joiners are available separately.

Benefits & Features:

- Includes cover (Part No: TC 1279-90)
- Clips straight into joiner
- Tough, fire retardant material
- Joiners (Part No's: TC1279-27 & TC1279-73, Telstra No's: 035300514 & 035300788 or TC1279-248A); available separately
- Purchase by the unit

Technical Attributes:

Dimensions	82mm (W) x 105mm (H) x 107mm (D)
Weight	90g
Materials	Fire retardant plastic, Halogen free, UL94-VO rated