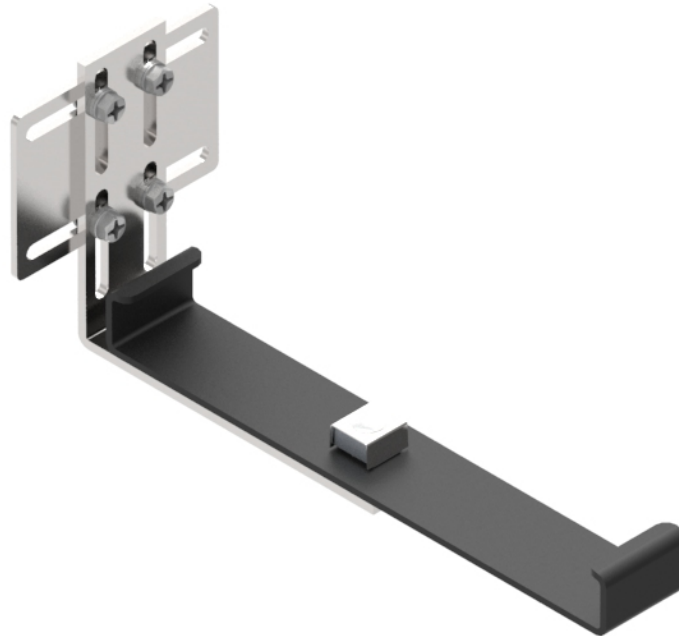




Part Number: **TC1279-133KIT**
Description: **WALL MOUNTING BRACKET KIT,
220mm DUCT**



Use / Application:

The wall, mounting bracket kit is used to attach 220mm plastic duct to any existing structure. It is simply a right angle bracket (Part No: TC1279-104) with slots for fitting to steel work or walls, plus a wall mounting plate (Part No: TC1279-104A) to allow 37mm of sideways adjustment. On its' horizontal face it accepts a 220mm duct mounting bracket (Part No: TC1279-13); which is supplied.

Benefits & Features:

- Provides vertical & horizontal mounting flexibility
- Simple, dual application
- Robust
- Economical
- Includes 90 degree mounting bracket (Part No: TC1279-104), extension bracket (Part No: TC1279-104A); and
- 220mm duct mount bracket (Part No: TC1279-13); nut, bolt & washers

Technical Attributes:

Dimensions	70mm (W) x 30mm (H) x 250mm (D) (3mm thick)
Weight	680g
Materials	Mild steel
	Fixing brackets – nickel plated finish
	Duct mounting bracket – powder coat black