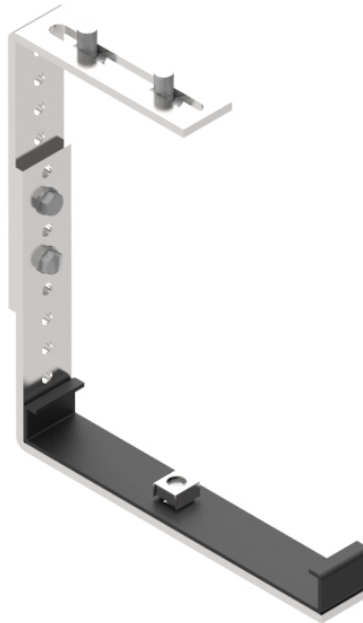




Part Number: **TC1279-155BKIT**
Description: **C RAIL MOUNTING KIT, 220mm DUCT**



Use/Application:

This clamp is a means of attaching 220mm Duct systems to C Rail. It is attached to the rail by two screws. Multiple holes provide vertical adjustment in 21mm increments. Use in conjunction with 220mm duct mounting brackets (Part No's: TC1279-15A).

Benefits & Features:

- Simple clamp system adapts to C Rail
- Suits 220mm duct systems
- Includes: nuts, screws and washers
- Purchase by the unit

Technical Attributes:

| | |
|-------------------|---|
| Dimensions | 40mm (W) x 260mm (H) x 200mm (D) |
| Weight | 1.420kg |
| Materials | Mild steel, Silver and Powder coated black finish |