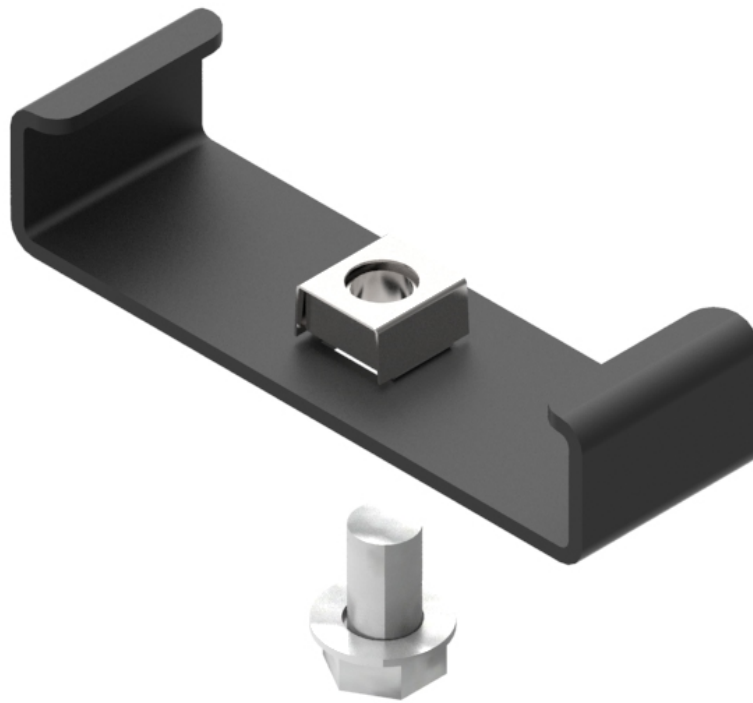


Part Number: **TC1279-16A**
 Description: **DUCT MOUNTING BRACKET, AND BOLT ASSEMBLY, 100mm DUCT**



Use / Application:

This assembly consists of a standard 100mm duct support bracket, with a captive M12 nut and bolt set; that enables the duct support bracket to be bolted to any other mounting bracket. This assembly is used where the duct is directly mounted to flat brackets with Ø13mm (1/2" clearance) holes.

Benefits & Features:

- Simple, captive, nut and bolt system that adapts to any support bracket.
- Suits 100mm duct systems
- Includes M12 bolt and flat washer
- Purchase as a unit

Technical Attributes:

Dimensions	40mm (W) x 30mm (H) x 125mm (D) (3mm thick)
Weight	230g
Materials	Mild steel, clear plastic and threaded steel rod
Colour	Black, powder coat finish