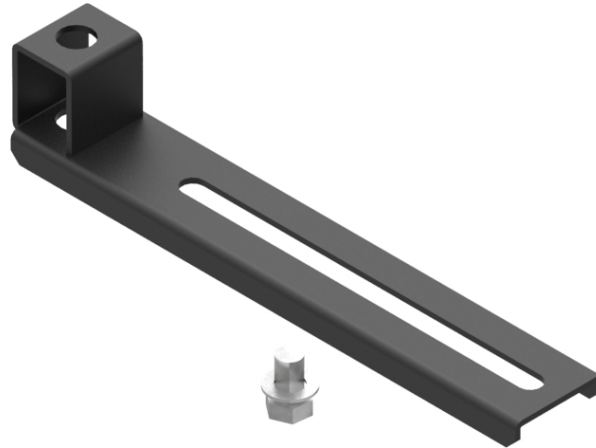




Part Number: **TC1279-303A**  
Description: **SIDE MOUNTING BRACKET, HEAVY DUTY,  
FOR 100mm, 220mm or 300mm DUCT**



## Use / Application:

This Side Mounting Bracket is used to install & secure 300mm duct (Part No: TC1279-275A) in a straight run. This Bracket is typically spaced at 0.9 metres or less, to make a rigid & strong installation. The duct is mounted in the Duct Mounting Bracket (Part No: TC1279-297A); which in turn is bolted to the Side Mounting Bracket, using the M12 (1/2") x 20mm long hex bolt & washer included. The Side Mounting Bracket is secured, at the desired height, to 5/8" UNC threaded rod, using 2 x 5/8" UNC hex nuts & washers. Both the 5/8" UNC threaded rod x 300mm, 760mm or 1000mm long (Part No's: 93x5-8x300; 93x5-8x760 or 93x5-8x1000); and 5/8" UNC hex nuts & washers (Part No: TC1279-120KIT); are available separately.

## Benefits & Features:

- Makes a rigid & secure installation
- Simple and quick to install
- Has flexibility in height adjustment & positioning of Duct Mounting Bracket (Part No: TC1279-297A)
- Includes an M12 (1/2") x 20mm long hex bolt & washer for fixing Duct Mounting Bracket (Part No: TC1279-297A)
- Duct Mounting Bracket (Part No: TC1279-297A), available separately
- Threaded rod 5/8" UNC x 300mm or 760mm long (Part No's: 93x5-8x300 or 93x5-8x760); 5/8" UNC hex nuts & washers (Part No: TC1279-120KIT); are available separately
- Purchase by the unit

## Technical Attributes:

<b>Dimensions</b>	50mm (W) x 55mm (H) x 290mm (D)
<b>Weight</b>	518g
<b>Materials</b>	Mild steel. Powdercoat black