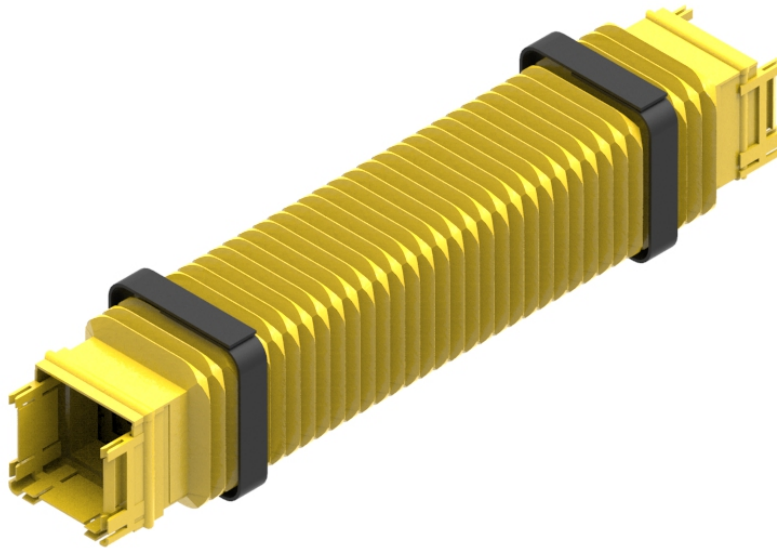




Part Number: **TC1279-85KIT**
Description: **OPEN FLEXIBLE TUBE KIT,
50mm SQUARE x 350mm LONG**



Use / Application:

The square convoluted tube is used: as an openable, flexible take off point; or for feeding new optical fibre cords to a rack. It consists of two specially prepared convoluted tubes: which clip together and separate to allow access to the optical fibre cords within. The tube attaches using a standard joiner (Part No: TC1279-73) to any 50mm square duct component. Hook and loop (eg Velcro style) fastening straps are used to secure the two tube halves together. This square convoluted tube is typically used with: Break-Out and Drop Off Kit, 50mm Duct (Part No: TC1279-87KIT); Drop Off Assembly, 50mm Square (Part No: TC1279-89A); or Drop Off Kit, 50mm Square (With Ramp Off) (Part No: TC1279-89KIT); available separately.

Benefits & Features:

- Openable tube design, to allow access to optical fibre cords within
- Tough, flame retardant material
- Hook and loop (eg. Velcro style) fastening straps provided
- Standard joiners (2 x Part No: TC1279-73); are supplied
- Recommended fibre-count 100/120 x Ø3mm optical fibre cords (maximum)

Technical Attributes:

Dimensions	50/70mm (W) x 50/70mm (H) x 330/350mm (D)
Weight	200g
Materials	Flame Retardant Plastic