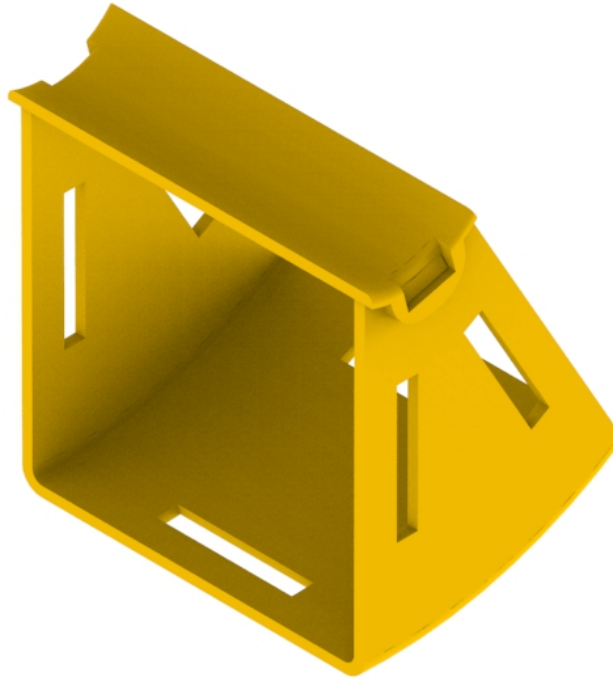




Part Number: **TC1279-113-30A**
Description: **ELBOW ASSEMBLY, UP, 30°,
INTERNAL LID, 100mm DUCT**



Use / Application:

The 30° up elbow is a 100mm vertical lead off with an internal lid, so that new optical fibre cords can be installed within the elbow and existing optical fibre cords removed, where necessary. This is usually used where cords may be already installed and either an angular duct feed off or an alignment adjustment is needed. There are two 100mm outlets which use either: standard joiners (Part No. TC1279-27) or slotless joiners (Part No: TC1279-248A); that are available separately.

Benefits & Features:

- Provides easy access for optical fibre cords, and allows optical fibre cords to be retrofitted
- Removable cover supplied
- Clips straight into either: a standard joiner (Part No. TC1279-27) or a slotless joiner (Part No: TC1279-248A); which are available separately
- Tough, fire retardant material
- Purchase by the unit

Technical Attributes

| | |
|-------------------|---|
| Dimensions | 123mm (W) x 110mm (H) x 106mm (D) |
| Weight | 250g |
| Materials | Fire retardant plastic, Halogen free, UL94-VO rated |