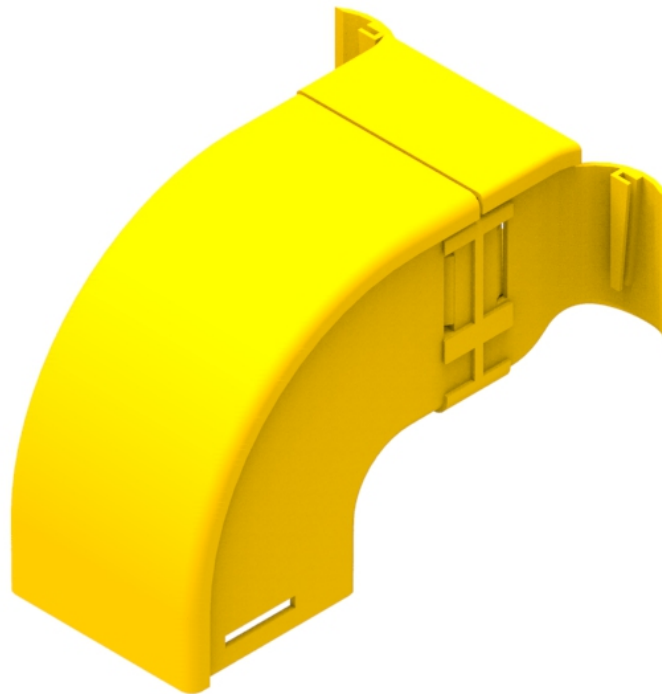




Part Number: **TC1279-111KIT**

Description: **ELBOW ASSEMBLY, KIT, DOWN, 90°, WITH
AN OUTLET GUIDE (A TRUMPET) FOR 100mm x 100mm DUCT**



Use/Application:

The 90° down elbow kit is a 100mm vertical drop off with an external lid, fitted with an outlet guide (Part No: TC1279-218A), using a standard 100mm duct joiner (Part No: TC1279-27). This outlet guide (eg an outlet trumpet) enables optical fibre cords to be dropped-off to a lower duct, at a controlled radius of 30mm. It has removable lids that allow quick and easy installation of optical fibre cords within the elbow. This is usually installed where optical fibre cords are to be dropped off below. There is one 100mm outlet to connect to other duct items, using either: a standard joiner (Part No. TC1279-27) or a slotless joiner (Part No: TC1279-248A); that are available separately.

Benefits & Features:

- Provides a simple and effective drop-off for 100mm x 100mm duct
- Has removable lids
- Clips straight into joiner
- Tough, fire retardant material
- Standard joiners (Part No: TC1279-27) or slotless joiners (Part No: TC1279-248A); available separately
- Purchase by the unit

Technical Attributes:

| | |
|-------------------|---|
| Dimensions | 260mm (W) x 170mm (H) x 205mm (D) |
| Weight | 428g |
| Materials | Fire retardant plastic, Halogen free, UL94 V0 rated |