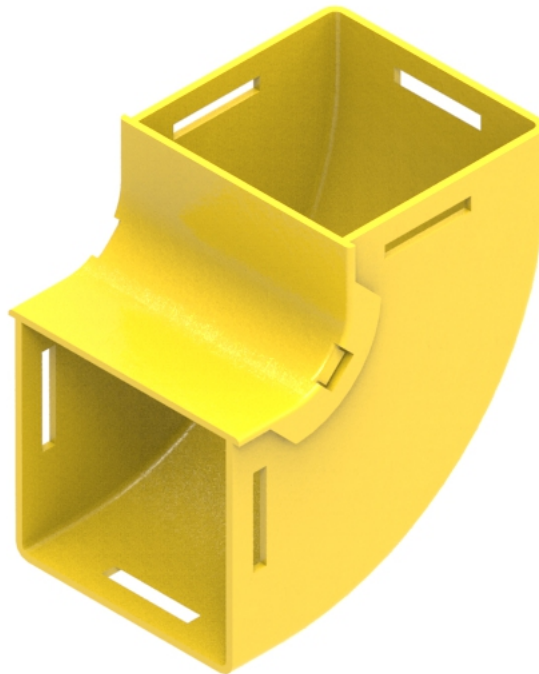




Part Number: **TC1279-113A**
Description: **ELBOW ASSEMBLY, UP, 90°,
INTERNAL LID, 100mm DUCT**



Use/Application:

The 90° up elbow is a 100mm vertical lead off with an internal lid, so that new optical fibre cords can be installed within the elbow and existing optical fibre cords removed, where necessary. This is usually used where optical fibre cords are to be installed vertically. There are two 100mm outlets which use either: standard joiners (Part No. TC1279-27) or slotless joiners (Part No: TC1279-248A); that are available separately.

Benefits & Features:

- Provides easy access for fibre cords and allows fibre cords to be retrofitted
- Removable cover supplied
- Clips straight into either: a standard joiner (Part No. TC1279-27) or a slotless joiner (Part No: TC1279-248A); which are available separately
- Tough, fire retardant material
- Purchase by the unit

Technical Attributes:

Dimensions	175mm (W) x 175mm (H) x 10mm (D)
Weight	300g
Materials	Fire retardant plastic, Halogen free, UL94-VO rated