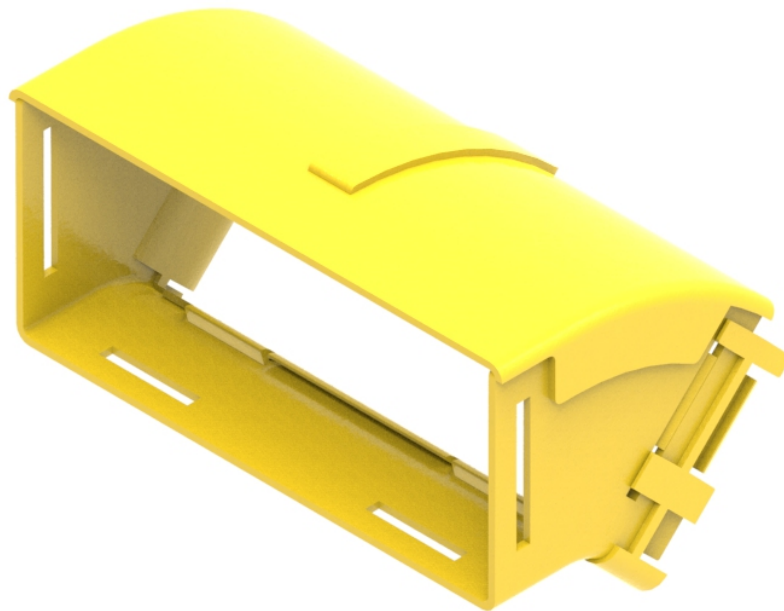




Part Number: **TC1279-123-45A**
Description: **ELBOW ASSEMBLY DOWN, 45°,
EXTERNAL LID, 220mm DUCT**



Use / Application:

The 45° down elbow is a 220mm angled lead off with an external lid, so that new optical fibre cords can be installed within the elbow and existing optical fibre cords removed, where necessary. This is usually used where an angular duct feed off or an alignment adjustment is needed. There are two 220mm outlets. One is equipped with a glued-in, modified joiner. (The special joiner provides a smooth internal curve for optical fibre cords). The other side uses either: a standard joiner (Part No. TC1279-25) or a slotless joiner (Part No: TC1279-250A); that are available separately.

Benefits & Features:

- Provides easy access for optical fibre cord/s and allows optical fibre cords to be retrofitted
- Removable cover supplied
- A special, glued-in joiner, on one outlet, provides a smooth transition for optical fibre cords
- Clips straight into either: a standard joiner (Part No. TC1279-25) or a slotless joiner (Part No: TC1279-250A); which are available separately
- Tough, fire retardant material
- Purchase by the unit

Technical Attributes:

Dimensions	150mm (W) x134mm (H) x 228mm (D)
Weight	290g
Materials	Fire retardant plastic, Halogen free, UL94-V0 rated