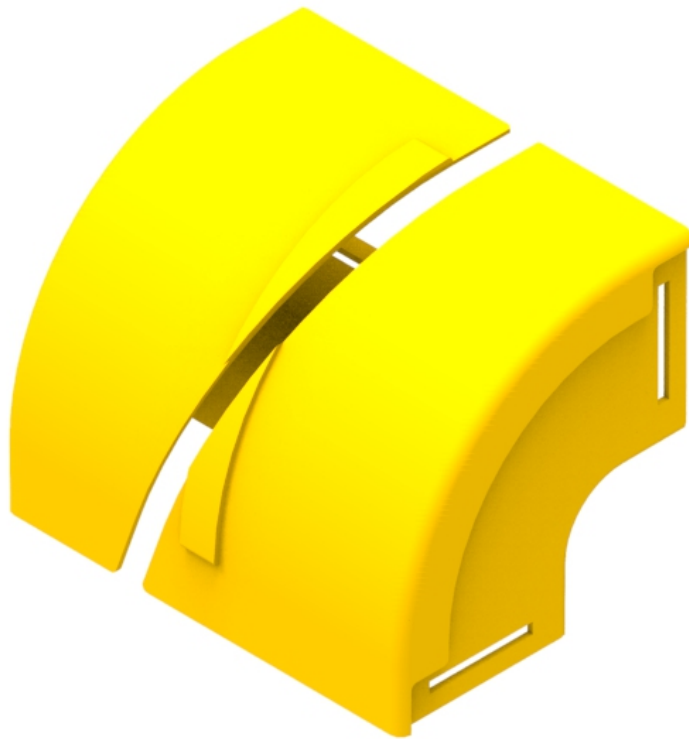




Part Number: **TC1279-123R**
Description: **ELBOW ASSEMBLY, DOWN, 90°,
EXTERNAL SLOT, RETROFIT, 220mm DUCT**



Use / Application:

This 90° down elbow is a 220mm vertical drop off with an external slot, so that new optical fibre cords can be installed within the elbow, and existing optical fibre cords removed, where necessary. This is usually installed where optical fibre cords are to be dropped off below. There are two 220mm outlets, which use either: standard joiners (Part No: TC1279-25) or slotless joiners (TC 1279-250A); which are available separately.

Benefits & Features:

- Provides optical fibre cord access and retrofit options
- Clips straight into a joiner
- Standard joiners (Part No: TC1279-25) or slotless joiners (TC 1279-250A); available separately
- Tough, fire retardant material
- Purchase by the unit

Technical Attributes:

Dimensions	175mm (W) x 175mm (H) x 226mm (D)
Weight	560g
Materials	Fire retardant plastic, Halogen free, UL94-V0 rated