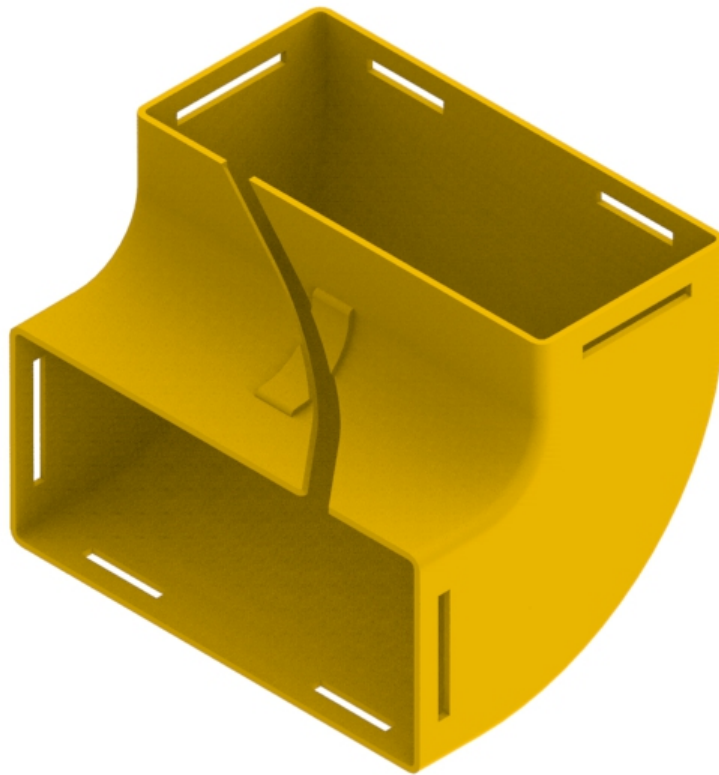




Part Number: **TC1279-125R**
Description: **ELBOW ASSEMBLY, UP, 90°,
INTERNAL SLOT, RETROFIT, 220mm DUCT**



Use / Application:

The 90° up elbow is a 220mm vertical lead off with an internal slot, so that new fibres can be installed within the elbow and existing fibres removed. This is usually installed where cables are to be installed vertically. There are two 220mm outlets, which use either: a standard joiner (Part No: TC1279-25) or a slotless joiner (Part No: TC1279-250A). The joiners are available separately.

Benefits & Features:

- Provides fibre access and retrofit options
- Clips straight into either: a standard joiner (Part No. TC1279-25) or a slotless joiner (Part No: TC1279-250A); which are available separately
- Tough, fire retardant material
- Purchase by the unit

Technical Attributes:

Dimensions	175mm (W) x 175mm (H) x 226mm (D)
Weight	550g
Materials	Fire retardant plastic, Halogen free, UL94-V0 rated