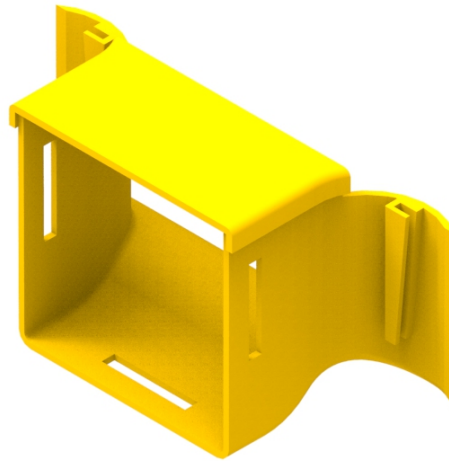




Part Number: TC1279-218A

Description: BREAK OUT ASSEMBLY (OR OUTLET TRUMPET),
100 x 100mm, USED IN 300, 220 AND 100mm DUCT



Use / Application:

The break out assembly is used to provide a safe, exit for fibre to equipment, at any point in either a 300, 220 or 100mm ducting system. It is normally used to provide a break out in existing duct systems, and clips straight into a cut out provided by the cutout tool (Part No: TC1279-231KIT) or made using the cutout jig (Part No: TC1279-483A). When used as described, it provides a 100mm outlet; to which any standard 100mm part can be fitted (using either: the standard joiner (Part No: TC1279-27) or the slotless joiner (Part No: TC1279-248A); which are available separately. It can also be used with vertical duct to feed patch cords down to a rack. **(Used as a Trumpet Outlet).**

Benefits & Features:

- Lid to suit included
- Fits directly to the cut out provided by the standard tool (Part No: TC1279-231KIT) or made using the cutout jig (Part No: TC1279-483A); available separately
- Connects to duct using either: the standard joiner (Part No: TC1279-27) or the slotless joiner (Part No: TC1279-248A); which are available separately
- Tough, fire retardant material
- Purchase by the unit

Technical Attributes:

| | |
|------------|---|
| Dimensions | 202mm (W) x 104mm (H) x 88mm (D) |
| Weight | 60g |
| Materials | Fire retardant plastic, Halogen free, UL94-VO rated |
| Colour | Yellow |