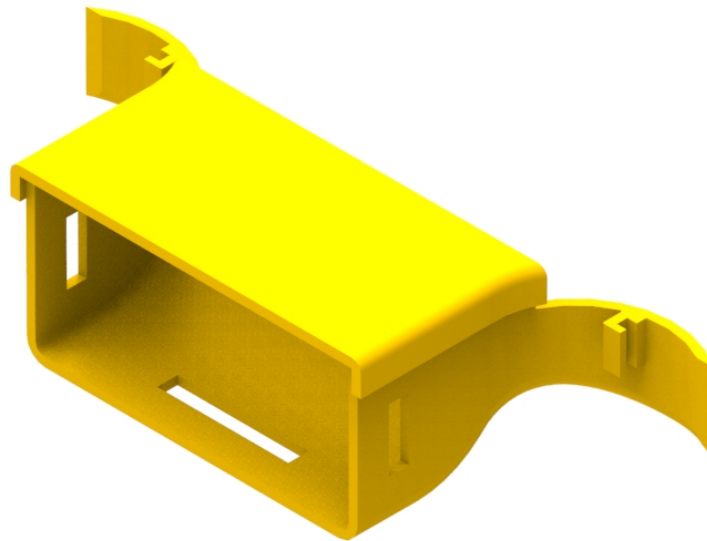




Part Number: **TC1279-232A**
Description: **BREAK OUT ASSEMBLY 100 x 50mm,
USED WITH 220, 100 and 100 x 50mm DUCT**



Use / Application:

This assembly is used to provide a 100mm wide by 50mm high break out of existing duct (used in either: 220, 100 or 100 x 50mm duct). i.e. where a duct houses working optical fibre cords it is not a simple process to cut the duct and install a standard tee; as this requires two precision cuts, duct relocation and joining around active circuits. This assembly allows break out, without interference to patch cords already in the duct; using a simple cut out tool (or cut out jig) and joiner (Part No's: TC1279-231KIT or TC1279-483A & TC1279-226 respectively); available separately.

Benefits & Features:

- Simple retrofit with cut out tool or cut out jig (available separately) (Used with fibre protector Part No: TC1279-50-3)
- Includes cover
- Joiner (Part No: TC1279-226); available separately
- Tough, fire retardant material
- Purchase by the unit

Technical Attributes:

Dimensions	202mm (W) x 51mm (H) x 88mm (D)
Weight	78 g
Materials	Fire retardant plastic, Halogen free, UL94-VO rated
Colour	Yellow