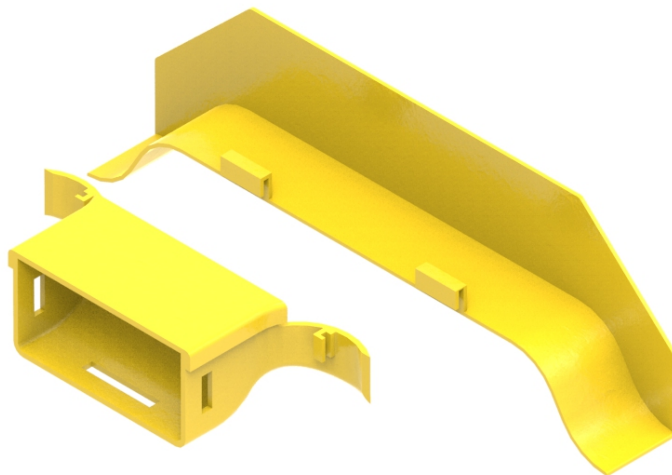




Part Number: **TC1279-232KIT**

Description: **BREAK OUT KIT, 100 x 50mm DUCT,  
USED IN 300, 220, AND 100mm DUCT**



## Use / Application:

This kit is used to provide a 100mm wide by 50mm high break out for either a 300, 220 or 100 mm duct system. The kit consists of: a Large Breakout Ramp-off (Part No: TC1279-294) and a Break Out Assembly (Part No: TC1279-232A). This kit allows a break out, for optical fibre cords, to be quickly and easily installed, anywhere along a length of straight duct, after a simple cut out has been made using tool (Part No: TC1279-231KIT) or cut out jig (Part No: TC1279-483A). Other, standard, 100 x 50mm duct system components can be fitted to the Break Out Assembly (Part No: TC1279-232A), using a standard joiner (Part No: TC1279-226). These items are available separately. The Large Breakout Ramp-off (Part No: TC1279-294) provides a guaranteed radius of 30mm for exiting optical fibre cords.

## Benefits & Features:

- Simple & quick installation, using cut out tool (Part No: TC1279-231KIT) or cut out jig (Part No: TC1279-483A); which are available separately
- Guarantees the radius of leaving optical fibre cords at 30mm
- Allows connection to 100 x 50mm duct system components; which are available separately
- Tough, fire retardant material
- Purchase by the unit

## Technical Attributes:

<b>Dimensions</b>	320mm (W) x 100mm (H) x 9 mm (D)
<b>Weight</b>	180g
<b>Materials</b>	Fire retardant plastic, Halogen free, UL94-V0 rated
<b>Colour</b>	Yellow