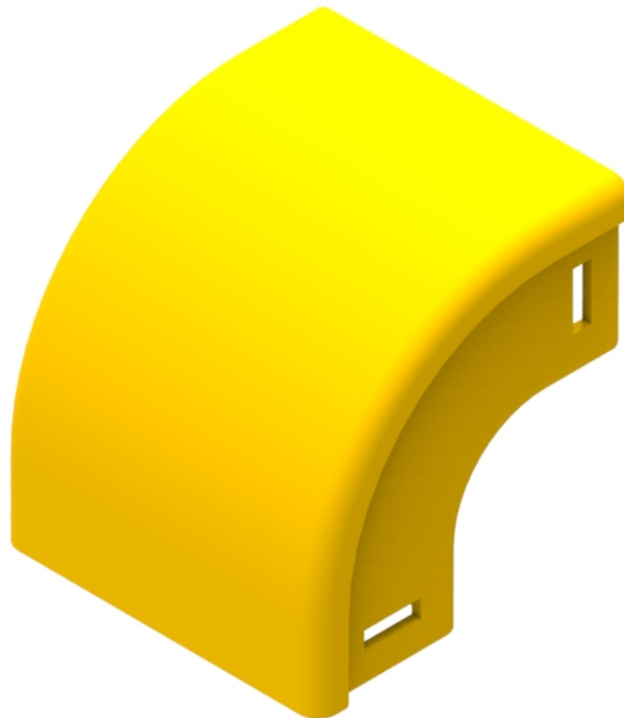




Part Number: **TC1279-236A**
Description: **ELBOW ASSEMBLY, DOWN,
90°, EXTERNAL LID, 100mm x 50mm DUCT**



Use / Application:

The 90° down elbow is a 100 x 50mm vertical drop off with an external cover, so that optical fibre cords within the elbow are easily accessed. This is usually installed where fibre cords are to be dropped off below. There are two 100 x 50mm outlets, which use standard joiners (Part No: TC1279-226); available separately.

Benefits & Features:

- Includes external cover, and clips straight into joiner
- Tough, fire retardant material
- Joiners (Part No: TC1279-226); available separately
- Purchase by the unit

Technical Attributes:

Dimensions	106mm (W) x 106mm (H) x 106mm (D)
Weight	200g
Materials	Fire retardant plastic, Halogen free, UL94-V0 rated