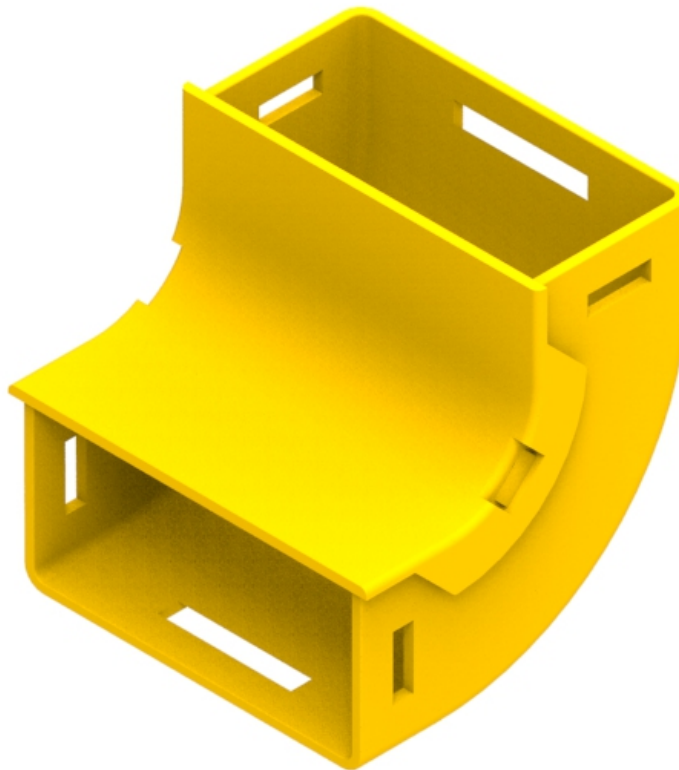




Part Number: **TC1279-246A**  
Description: **ELBOW ASSEMBLY, UP, INTERNAL LID,  
90°, 100mm x 50mm DUCT**



## Use / Application:

The 90° UP elbow is a 100 x 50mm vertical lead off with an internal lid, so that optical fibre cords within the elbow can be accessed. This is usually used where fibre cords are to be installed vertically. There are two 100 x 50mm outlets, which use standard joiners (Part No: TC1279-226) Joiners are available separately.

## Benefits & Features:

- Provides fibre access and retrofit options
- Clips straight into joiner (Part No: TC1279-226); available separately
- Tough fire retardant material
- Purchase by the unit

## Technical Attributes:

<b>Dimensions</b>	106mm (W) x 106mm (H) x 110mm (D)
<b>Weight</b>	250g
<b>Materials</b>	Fire retardant plastic, Halogen free, UL94-V0 rated