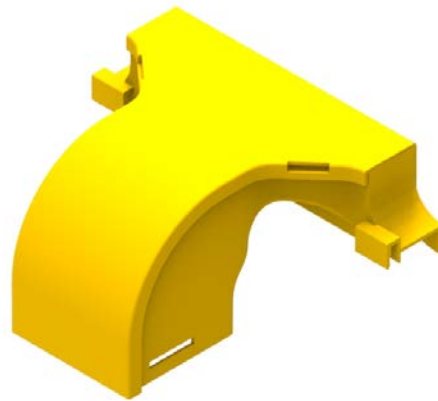
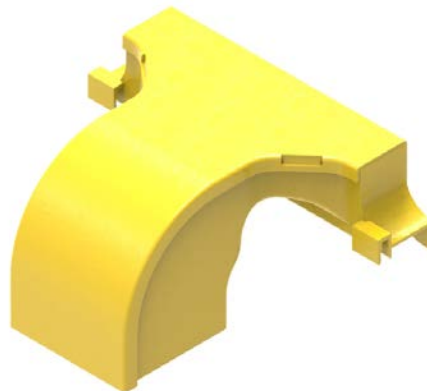


Part Number: **TC1279-307A, TC1279-307ASL**

Description: **TOP OUTLET ASSEMBLY, VERTICAL OUTLET, DOWN, FOR 100mm, 220mm & 300mm DUCT**



**TC1279-307ASL**



**TC1279-307A**

## Use / Application:

This Top Outlet Assembly, Vertical Outlet, Down, for optical fibre cords, allows individual cords to exit, vertically down, anywhere along a length of straight 100mm, 220mm & 300mm duct. The unit simply fits along the edge of the duct – ie the side of the duct is not specially prepared or cut. The exiting optical fibre cords are guided through an MBR of 30mm whilst completing this change of direction. The outlet curve has no ribs ie there is nothing to restrict the naturally occurring free flow of optical fibre cords. The outlet guide can be connected to 100mm duct, using a slotless joiner (Part No: TC1279 – 248A). (A standard joiner (Part No: TC1279 – 27) can also be used). Alternatively, the 100mm outlet can be connected to any standard duct size, as required, using standard duct adapters. The Top Outlet Assembly comes with a screw, which acts as a stand - off from the side of the duct. For heavy duty applications, the unit can be mounted on a steel bracket (Part No: TC1279 – 292A), which is bolted to the central, mid area of the unit. The steel mounting bracket is available separately. The mounting bracket can be secured to any of the standard duct mounting items. This unit comes with a removable lid. Duct covers for 100mm, 220mm & 300mm duct, are available separately. These items cover the area of duct behind the Top Outlet Assembly (Part No's: TC1279-290B; TC1279-290C; TC1279-290D).



## Benefits & Features:

- Provides a vertical, down exit for optical fibre cords, anywhere along a straight 100mm, 220mm or 300mm duct
- Maintains the MBR of 30mm for all exiting optical fibre cords
- Easily installed without having to cut or prepare the side of the duct
- Connects to 100mm duct, for exiting optical fibre cords, using a slotless joiner (Part No: TC1279 – 248A) (Alternatively, a standard joiner (Part No: TC1279 – 27) can be used). These items are available separately
- Easily and effectively mounts on mounting bracket (Part No: TC1279 – 292A); which is available separately
- Purchase by the unit

## Technical Attributes:

<b>Dimensions</b>	279mm (W) x 210mm (H) x 130mm (D)
<b>Weight</b>	420g
<b>Materials</b>	Fire retardant plastic, Halogen free, UL94-V0 rated