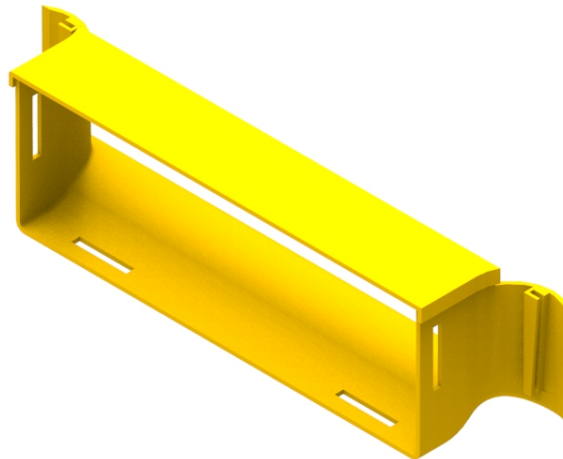




Part Number: **TC1279-379A**
Description: **BREAK OUT ASSEMBLY, (OR OUTLET TRUMPET), 300 x 100mm, USED IN 300, 220 AND 100mm DUCT**



Use / Application:

The break out assembly is used to provide a safe, exit for optical fibre cord/s to equipment, at any point in a 300mm ducting system. It is normally used to provide a break out in existing duct systems, and clips straight into a cut out provided by the cut out tool (Part No: TC1279-231KIT) or made using the cut out jig (Part No: TC1279-483A); which are available separately. A cut out width of 345mm \pm 2mm needs to be made in the side of the duct. This is about 2.3 cutting operations of the tool, that makes a 145mm wide cut. When used as described, the break out assembly provides a 300mm curved outlet; to which any standard 300mm part can be fitted using the slotless joiner (Part No: TC1279-287A); available separately. A lid is supplied. It can also be used with vertical duct to feed patch cords down to a rack.
(Used as a Trumpet Outlet)

Technical Attributes:

- Supplied with a lid (Part No: TC1279-391)
- Fits directly to the cut out provided by the standard tool (Part No: TC1279-231KIT); available separately
- Connects to duct using the slotless joiner (Part No: TC1279-287A); available separately
- Tough, fire retardant material
- Purchase by the unit

Technical Attributes:

Dimensions	405mm (W) x 97mm (H) x 115mm (D)
Weight	232g (Lid = 60g)
Materials	Fire retardant plastic, Halogen free, UL94-V0 rated
Colour	Yellow