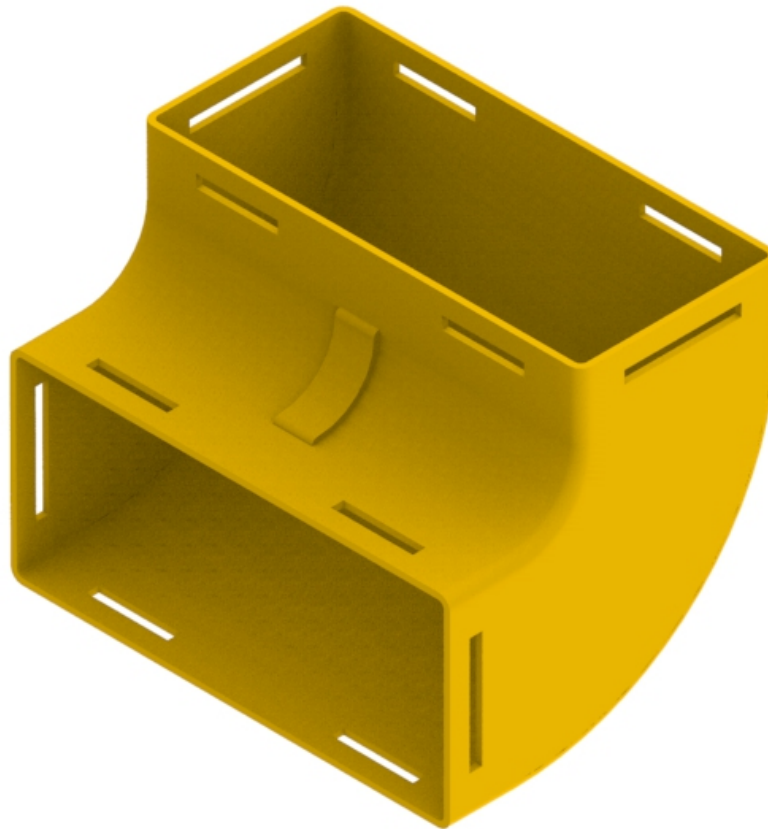




Part Number: **TC1279-37A**
Description: **ELBOW ASSEMBLY, UP AND DOWN,
90°, (ENCLOSED), 220mm DUCT**



Use / Application:

The 220mm up/down elbow assembly is used to provide a vertical right - angled bend with standard 220mm straight ducting. It provides a simple method for directing fibres between different levels. It requires a standard joiner (Part No: TC1279-25, Telstra No: 035300515) at each interface; which provides a smooth & strong joint. (Note: A slotless joiner, Part No: TC1279-250A is also available).

Benefits & Features:

- Clips straight into joiner
- Tough, fire retardant material
- Joiners (Part No's: TC1279-25, Telstra No: 035300515 or TC1279-250A), available separately.
- Purchase by the unit

Technical Attributes:

Dimensions	175mm (W) x 226mm (H) x 175mm (D)
Weight	470g
Materials	Fire retardant plastic, Halogen free, UL94-V0 rated