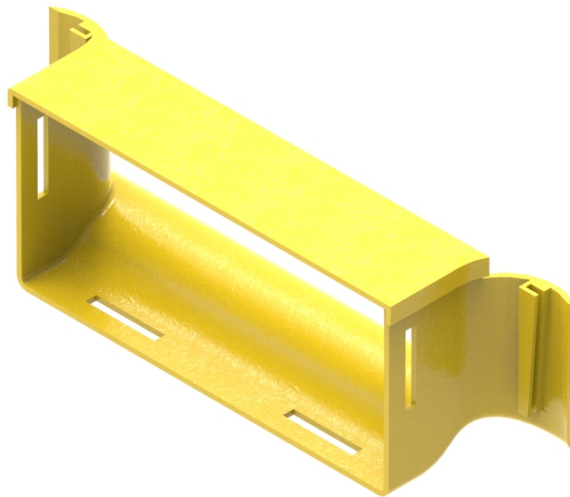




Part Number: **TC1279-330A**
Description: **BREAK OUT ASSEMBLY, (OUTLET TRUMPET), 220 x 100mm, USED IN 300, 220 and 100mm DUCT**



Use / Application:

The break out assembly is used to provide a safe exit for optical fibre cord/s to equipment, at any point in 100, 220 or 300mm ducting system. It is normally used to provide a break out in existing duct systems, and clips straight into a cut-out, 2 cuts wide, provided by the cut-out tool (Part No: TC1279-231KIT), or using the cut-out jig (Part No: TC1279-483A); available separately. When used as described, it provides a 220mm outlet; to which any standard 220mm part can be fitted (using either: the standard joiner, Part No: TC1279-25) or the slotless joiner Part No: TC1279-250A); that are available separately. It can also be used with vertical duct to feed patch cords down to a rack. (Used as a Trumpet Outlet).

Benefits & Features:

- Lid to suit included (Part No: TC1279-332)
- Fits directly to the cut out, 2 cuts wide, provided by the standard tool (Part No: TC1279-231KIT); or using the cut-out jig (Part No: TC1279-483A); available separately.
- Connects to duct using either: the standard joiner (Part No: TC1279-25) or the slotless joiner (Part No: TC1279-250A); which are available separately
- Tough, fire retardant material
- Purchase by the unit

Technical Attributes:

| | |
|-------------------|---|
| Dimensions | 325mm (W) x 105mm (H) x 111mm (D) |
| Weight | 182g (Lid = 46g) |
| Materials | Fire retardant plastic, Halogen free, UL94-V0 rated |
| Colour | Yellow |