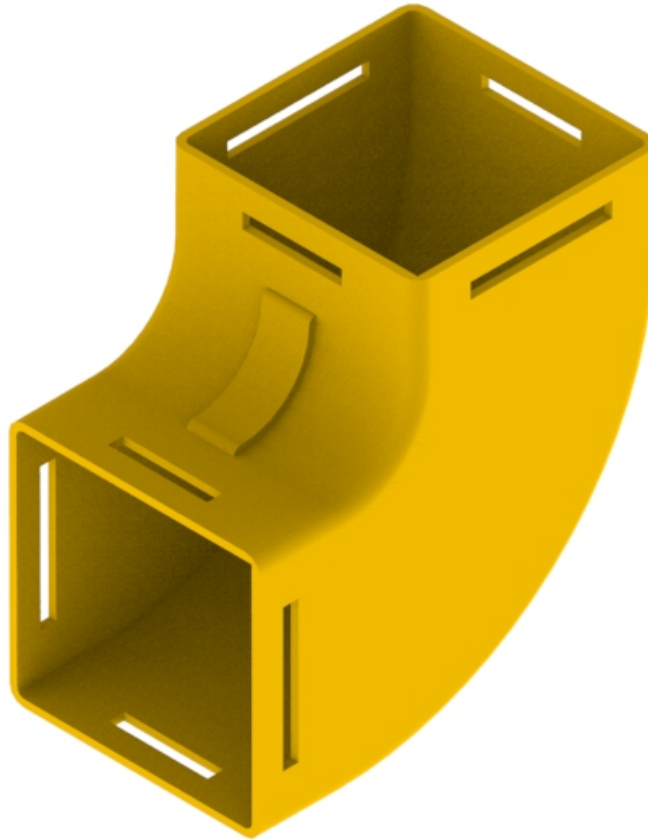




Part Number: **TC1279-39A**  
Description: **ELBOW ASSEMBLY, UP AND DOWN,  
90°, (ENCLOSED), 100mm DUCT**



## Use / Application:

The 100mm up/down elbow assembly is used to provide a vertical right - angled bend with standard 100mm straight ducting. It provides a simple method for directing fibres between different levels. It requires a standard joiner (Part No: TC1279-27, Telstra No: 035300514), or a slotless joiner (Part No: TC1279-248A) at each interface; which provides a smooth & strong joint.

## Benefits & Features:

- Clips straight into joiner
- Tough, fire retardant material
- Joiners (Part No's: TC1279-27, Telstra No: 035300514 or TC1279-248A), available separately
- Purchase by the unit

## Technical Attributes:

<b>Dimensions</b>	174mm (W) x 174mm (H) x 106mm (D)
<b>Weight</b>	290g
<b>Materials</b>	Fire retardant plastic, Halogen free, UL94-VO rated