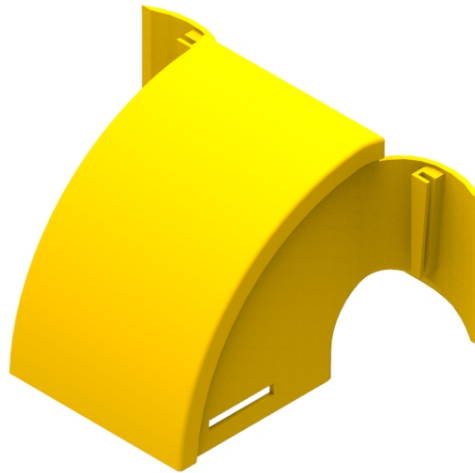


Part Number: **TC1279-452A**

Description: **ELBOW ASSEMBLY, BREAK-OUT KIT, DOWN, 90° (100mm x 100mm DUCT), FOR 100mm, 220mm OR 300mm DUCT**


Use / Application:

This elbow assembly, down, 90°, (incorporating the duct break-out component), is used to provide a safe exit for optical fibre cords to equipment, at any point in a 100, 220 or 300mm duct system. It allows optical fibre cords to feed vertically down to a rack. The elbow clips straight into a cut out, 1 cut wide x 75mm deep, made by the cut out tool (Part No: TC1279-231KIT). The cut down is made to the top of the ducts, highest, longitudinal rib. This 100 x 100mm duct, elbow, 90 degree, down can accept any standard 100 x 100mm duct item, using a standard or slotless joiner. It can also accept an end cap (Part No: TC1279-456), that allows one large dia convoluted tube to be connected to it. The tube is 75mm ID/88mm OD mm (Part No: TC1279-458). With a prepared square end, the tube screws into the mating outlet port. The 90 degree, down break out has a snap-fit, removable cover (Part No: TC1279-453). Accessories/other items available separately.

Technical Attributes:

- Provides a 90°, down bend, (and break-out facility), at any point in a 100mm, 220mm or 300mm duct system
- Can accept any standard 100 x 100mm duct item using a joiner
- Can also accept 1 x 75mm ID/88 mm OD convoluted tube (TC1279-458), using end cap (TC1279-456)
- Includes removable cover (Part No: TC1279-453)
- Tough, fire retardant, ROHS compliant material
- Purchase as an item

Technical Attributes:

Dimensions	220mm (W) x 150 mm (H) x 170 mm (D)
Weight	250g
Materials	Fire retardant plastic, Halogen free, UL94-V0 rated