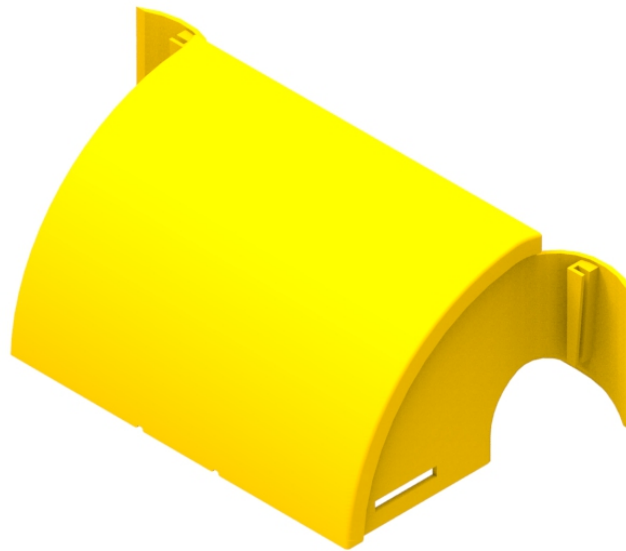




Part Number: **TC1279-454A**

Description: **ELBOW ASSEMBLY, BREAK-OUT KIT, DOWN, 90° (220mm x 100mm DUCT), FOR 100mm, 220mm OR 300mm DUCT**



## Use / Application:

This elbow assembly, down, 90°, (incorporating the duct break-out component), is used to provide a safe exit for optical fibre cords to equipment, at any point in a 100, 220 or 300mm duct system. It allows optical fibre cords to feed vertically down to a rack. The elbow clips straight into a cut out, 2 cuts wide x 75mm deep, made by the cut out tool (Part No: TC1279-231KIT). The second cut down is made to the top of the ducts, highest, longitudinal rib. This 220 x 100mm duct, elbow, 90 degree, down, can accept any standard 220mm x 100mm duct item, using a standard or slotless joiner. It can also accept an end cap (Part No: TC1279-457) that allows two large dia convoluted tubes to be connected to it. Each tube is 75mm ID/88mm OD mm (Part No: TC1279-458). With a prepared square end, each tube screws into the mating outlet port. The 90 degree, down break out has a snap-fit, removable cover (Part No: TC1279-455). Accessories/other items available separately.

## Technical Attributes:

- Provides a 90°, down bend, (and break-out facility), at any point, in a 100mm, 220mm or 300mm duct system
- Can accept any standard 220 x 100mm duct item using a joiner
- Can also accept 2 x large size convoluted tubes (Part No: TC1279-458), using end cap (Part No: TC1279-457)
- Includes removable cover (Part No: TC1279-455)
- Tough, fire retardant, ROHS compliant material
- Purchase as an item

## Technical Attributes:

<b>Dimensions</b>	342mm (W) x 150mm (H) x 170mm (D)
<b>Weight</b>	365g
<b>Materials</b>	Fire retardant plastic, Halogen free, UL94-V0 rated