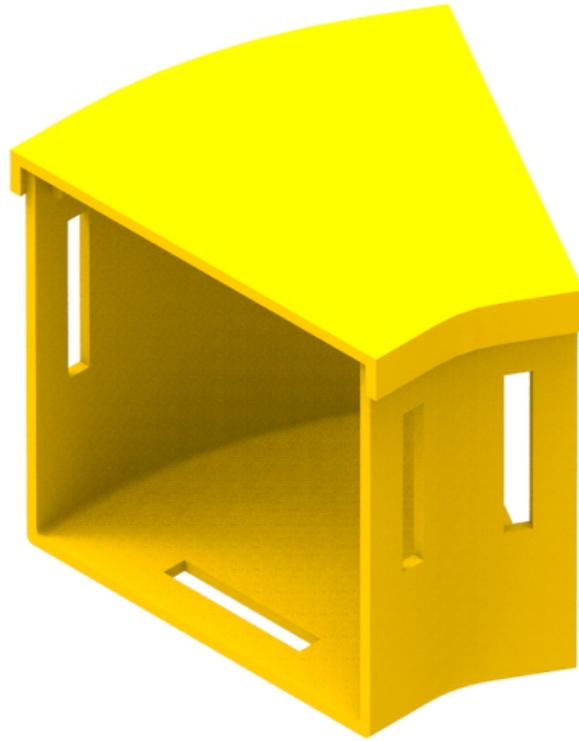




Part Number: **TC1279-47A**
Description: **ELBOW ASSEMBLY, HORIZONTAL,
30°, 100mm DUCT**



Use / Application:

This elbow provides a method of diverting the 100mm duct system around objects. It can be used with a tee to feed a duct at 30° to the main system. The elbow can be used in pairs to align ducts and other components with an offset. The elbow is connected to the 100mm duct using either a: standard joiner (Part No: TC1279-27, Telstra Part No: S353/514) or a slotless joiner (Part No: TC1279-248A), which are available separately.

Benefits & Features:

- Provides a 30° bend
- Includes cover
- Clips straight into either a: standard joiner (Part No: TC1279-27) or a slotless joiner (Part No: TC1279-248A); which are available separately
- Tough, fire retardant material
- Purchase by the unit

Technical Attributes:

Dimensions	107mm (W) x 105mm (H) x 115mm (D)
Weight	106g
Materials	Fire retardant plastic, Halogen free, UL94-VO rated