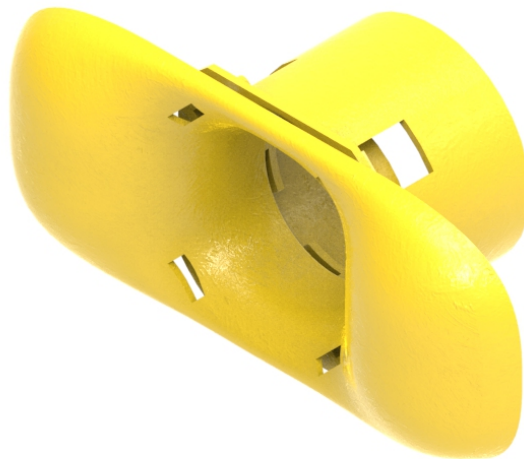




Part Number: **TC1279-602A**

Description: **DUCT SIDE SPILL-OUT, STRAIGHT OUTLET, WITH
Ø44mm ID / Ø50mm OD CONVOLUTED TUBING**



Use / Application:

This drop-off assembly can be installed anywhere along the length of a 100mm high duct (ie 100 x 100mm; 220 x 100mm and 300 x 100mm duct), to allow up to 80 pcs of Ø2mm optical fibre cord to leave the duct horizontally; or vertically (if installed on the floor of straight duct). The cords leave in Ø44mm ID / Ø50mm OD convoluted tube to transfer to other areas in the Exchange or CO. The assembly snap fits together in a Ø60mm hole cut into the side of the duct using a hole saw (Part No: TC1279-800); that is available separately. The hole position is first marked on the duct side wall, or floor with a template (Part No: TC1279-604KIT). It is recommended that a hand brace and bit style tool, rather than a power tool, be used to cut the hole if it is cut in the overhead working position. An optical fibre cord protection unit (Part No: TC1279-50-3) should be used to protect installed optical fibre cords as the Ø60mm hole is cut. This item is available separately.

Benefits & Features:

- Outlet clips into a Ø60mm hole cut into the 100mm high side of the duct, or on the floor of the duct
- Outlet provided with a protruding curved length ways surface to guide optical fibre cords smoothly into the outlet
- The outlet member clips into a convoluted tube connector, using 4 x clips, that holds the assembly firmly into the Ø60mm hole in the side of the duct
- Convoluted tube Ø44mm ID / Ø50mm OD (Part No: TC1279- 26Y [1m long] or TC1279-53Y [2m long]) screws into the horizontal convoluted tube connector, to make a secure connection. This convoluted tube is available separately
- The convoluted tube holds up to 80 x Ø2mm optical fibre cords
- Purchase as a kit

Technical Attributes:

Dimensions	155mm (W) x 65mm (H) x 70mm (D)
Weight	44g
Materials	Fire Retardant Plastic, Halogen Free, UL 94-V0 Rated