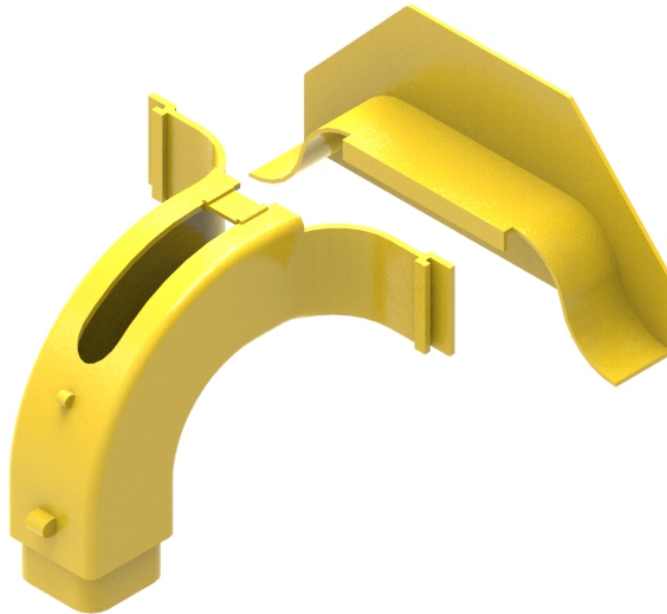




Part Number: **TC1279-89KIT**
Description: **DROP-OFF KIT, 50mm SQUARE,
WITH RAMP OFF**



Use / Application:

The drop off assembly is used to provide a safe exit for optical fibre cords, at any point, in either: 300, 220 or 100mm ducting. It fits into a cut - out provided by the cut - out tool (Part No: TC1279-50KIT); and is used in conjunction with RAMP-OFF (Part No: TC1279-42), which also clips into the same cut - out. It provides a square opening, over which a 50mm square flexible conduit (Part No: TC1279-85) can be fitted. This kit differs from Part No: TC1279-89A in that it contains the RAMP-OFF, which is used to provide a radius guide up to the cut out in 100mm deep ducting.

Benefits & Features:

- Includes RAMP OFF (Part No: TC1279-42)
- Clips straight into notched ducting
- Fits directly to 50mm square x 350mm long convoluted tube (Part No: TC1279-85); available separately
- Tough, fire retardant material
- No joiners are necessary
- Purchase by the unit

Technical Attributes:

Dimensions	215mm (W) x 105mm (H) x 95mm (D)
Weight	120g
Materials	Fire retardant plastic, Halogen free, UL94-V0 rated