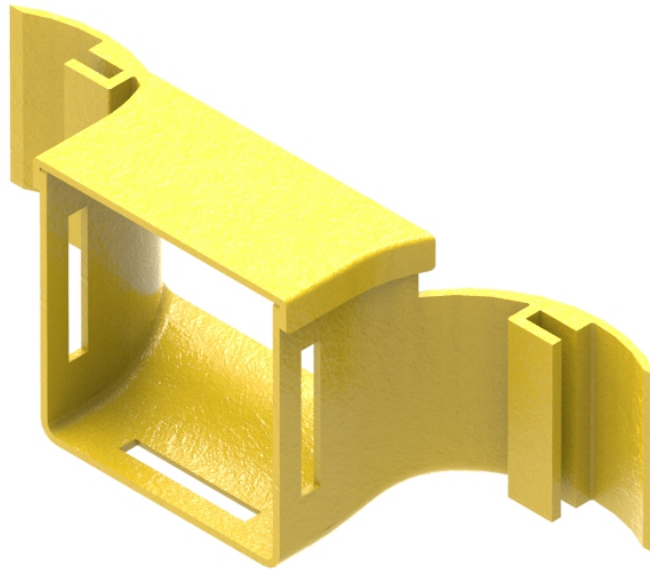




Part Number: **TC1279-93A**
Description: **BREAK – OUT, ASSEMBLY,
50mm x 50mm**



Use / Application:

The break out assembly is used to provide a safe exit, in a horizontal plane, at any point in 50mm ducting; for optical fibre cords to transmission equipment. It clips straight into a cut out provided by the cut-out tool (Part No: TC1279-50KIT) or made using the cut-out jig (Part No: TC1279-483A); available separately. The break out assembly provides a square opening, over which a 50mm square flexible conduit can be fitted.

Benefits & Features:

- Lid to suit included
- Fits directly to: 50mm square x 350mm long flexible conduit, (Part No: TC1279-85); available separately
- Tough, fire retardant material
- No joiners necessary
- Purchase by the unit

Technical Attributes:

Dimensions	145mm (W) x 56mm (H) x 45mm (D)
Weight	30g
Materials	Fire retardant plastic, Halogen free, UL94-VO rated
Colour	Yellow