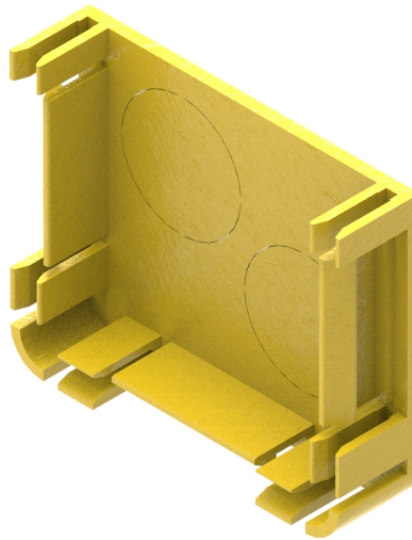




Part Number: **TC1279-127**  
Description: **END COVER, 50mm DUCT, WITH TWO 20mm DIA KNOCKOUTS**



## Use / Application:

The duct end cover is provided with two 21mmØ knockouts, that allow fitting of convoluted, flexible tube/s 20mm ID/25mm OD (Part No: TC1279-54 – 2m long). These convoluted tubes allow optical fibre cords to be dropped off from the duct to lower transmission equipment. The end cover is also used for sealing the open end of a standard 50mm straight duct. It snaps simply into the duct slots and can be removed with a screwdriver should the system need extending.

## Benefits & Features:

- No joiner needed
- Clips straight into 50mm duct end
- Adapts to standard 20mm ID/25mm OD, convoluted tube (Part No: TC1279-54); available separately
- Tough, fire retardant material
- Purchase by the unit

## Technical Attributes:

<b>Dimensions</b>	14mm (W) x 47mm (H) x 60mm (D)
<b>Weight</b>	30g
<b>Materials</b>	Fire retardant plastic, Halogen free, UL94-VO rated