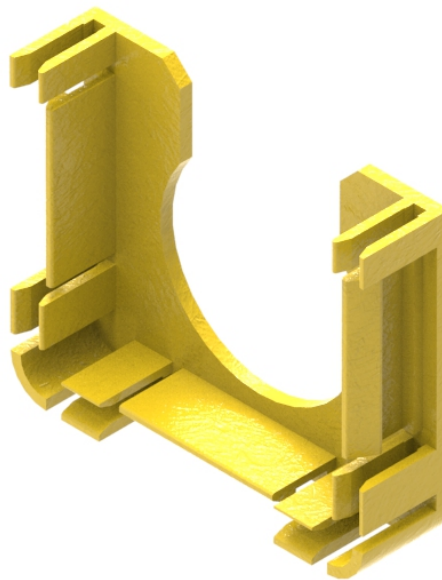


Part Number: **TC1279-127C**  
 Description: **END COVER, 50mm DUCT, WITH 38mm DIA CUTOUT**



## Use / Application:

The duct end cover is provided with a 38mmØ cut out, that allows fitting of a convoluted, flexible tube 32mm ID/38mm OD (Part No: TC1279-68 – 2m long). This convoluted tube allows optical fibre cords to be dropped off from the duct to lower transmission equipment. The end cover is also used for sealing the open end of a standard 50mm straight duct. It snaps simply into the duct slots and can be removed with a screwdriver should the system need Extending.

## Benefits & Features:

- No joiner needed
- Clips straight into 50mm duct end
- Adapts to standard 32mm ID/38 mm OD, convoluted tube (Part No: TC1279-68); available separately
- Tough, fire retardant material
- Purchase by the unit

## Technical Attributes:

<b>Dimensions</b>	14mm (W) x 47mm (H) x 60mm (D)
<b>Weight</b>	25g
<b>Materials</b>	Fire retardant plastic, Halogen free, UL94-VO rated