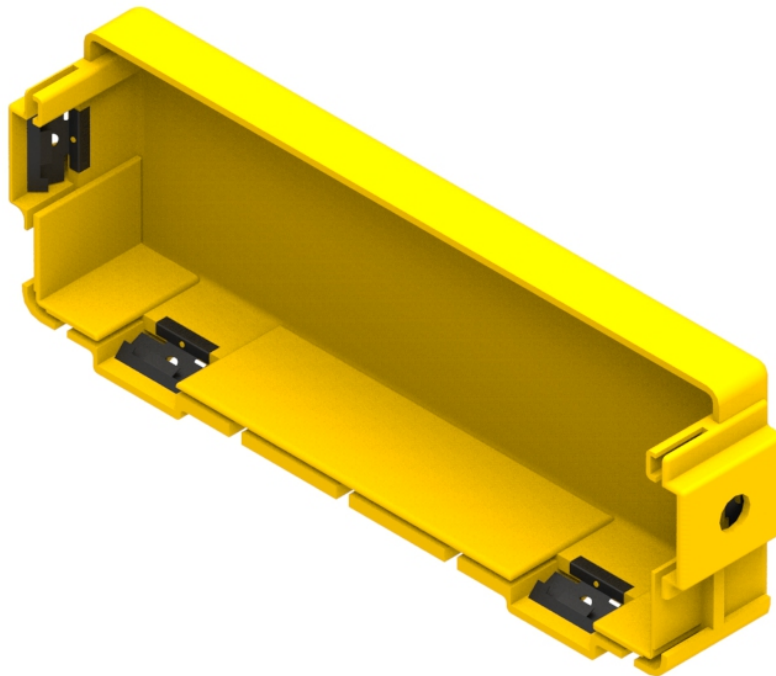




Part Number: **TC1279-288**
Description: **SLOTLESS END CAP ASSEMBLY,
FOR 300mm DUCT**



Use / Application:

This duct end cover is used for sealing the open end of a standard 300mm straight duct. They simply snap fit over the end of the duct, using the appropriate slotless duct joiner: 300mm slotless duct joiner Part No: TC1279-287A. The duct joiner is supplied. These end covers can be removed with a screwdriver, should the duct system need extending.

Benefits & Features:

- Clips straight into: 300mm duct end, using a slotless duct joiner: (Part No: TC1279-287A)
- Slotless duct joiner is supplied
- Tough, fire retardant material
- Purchase by the unit

Technical Attributes:

Dimensions	305mm (W) x 114mm (H) x 28mm (D)
Weight	300g
Materials	Fire retardant plastic, Halogen free, UL94-VO rated
Colour	Yellow