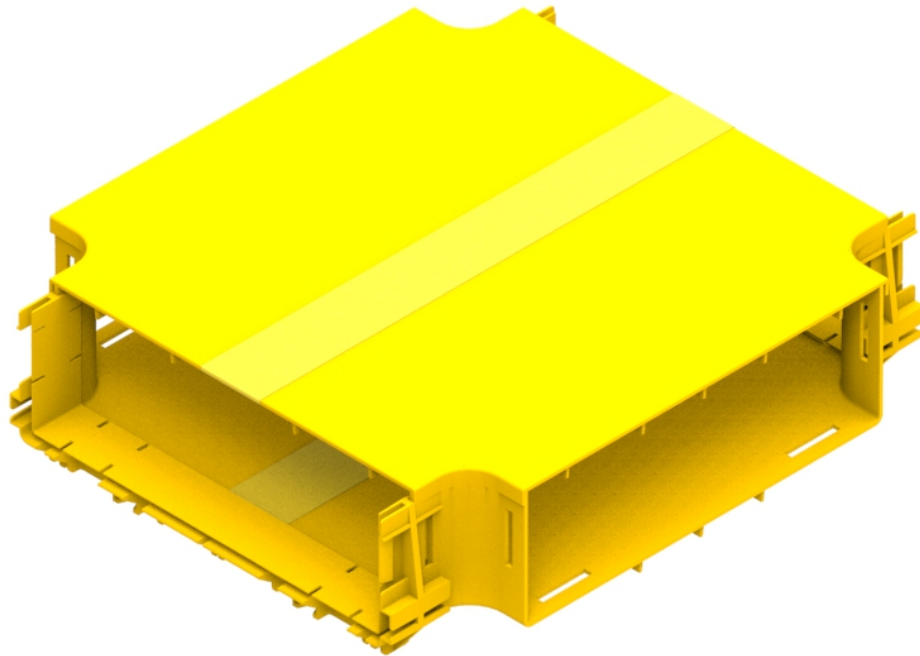




Part Number: **TC1279-300A**
Description: **CROSS CONNECTOR ASSEMBLY,
FOR 300mm DUCT**



Use / Application:

This cross connector is used to establish a right-angled intersection between two 300-mm ducts. I.e. all 4 arms of the connector are connected to 300mm duct or other components, using the standard joiner (Part No: TC1279-320). 2 x Standard Joiners (Part No: TC1279-320) are supplied. A slotless joiner for 300mm duct (Part No: TC1279-287A) is also available.

NOTE: Care should be taken not to lay more than 50mm depth of pigtails or patch cords in troughing, particularly where they cross each other at right angles. This may occur with this connector.

Technical Attributes:

- Includes cover (Part No: TC1279-301)
- Clips straight into standard joiner (Part No: TC1279-320)
- Tough, fire retardant material
- 2 x Standard Joiners (Part No: TC1279-320) supplied
- Purchase by the unit

Technical Attributes:

Dimensions	405mm (W) x 105mm (H) x 405mm (D)
Weight	1.75kg
Materials	Fire retardant plastic, Halogen free, UL94-V0 rated



Product Guide