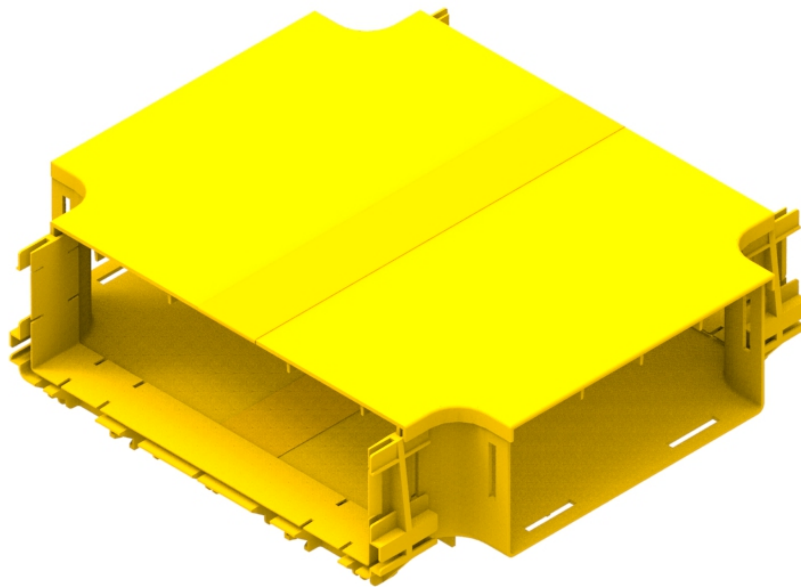




Part Number: **TC1279-331A**
Description: **CROSS CONNECTOR ASSEMBLY,
300 x 100 mm AND 220 x 100mm DUCT**



Use / Application:

This cross connector is used to establish a right, angled intersection between 300mm x 100mm and 220mm x 100mm duct. i.e. 2 arms of the connector are connected to both 300mm and 220mm duct, or other components. Included are 2x 220 mm x 100mm slotless duct joiners (Part No: TC1279-250A, Telstra No: 035301308). Joiners for 300mm x 100mm duct; either: standard joiners (Part No: TC1279-320KIT) or slotless joiners (Part No: TC1279-287A); are available separately.

NOTE: Care should be taken not to lay more than 50mm depth of pigtails or patch cords in troughing, particularly where they cross each other at right angles. This may occur with this connector.

Benefits & Features:

- Includes cover (Part No. TC 1279- 332) and clips straight into joiner
- Tough, fire retardant material
- 2x slotless joiners for 220mm x 100mm duct (Part No's: TC1279-250A, Telstra No: 035301308) are included
- Joiners for 300mm x 100mm duct, either: standard joiner (Part No:TC1279-320KIT) or a slotless joiner (Part No:TC1279-287A); available separately
- Purchase as a unit

Technical Attributes:

Dimensions	445mm (W) x 113mm (H) x 322mm (D)
Weight	1.31kg
Materials	Fire retardant plastic, Halogen free, UL94-V0 rated