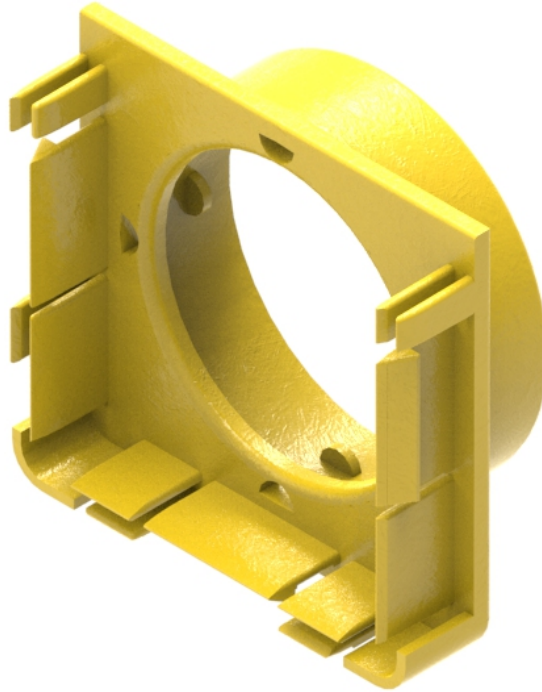


Part Number: **TC1279-456**  
 Description: **END COVER, 100mm x 100mm DUCT,  
 WITH 1x Ø75mm ID / Ø88mm OD OUTLET**



## Use / Application:

The duct end cover is provided with 1x large size Ø hole and connection, that allows fitting of a large size convoluted, flexible tube. The tube is Ø75mm ID / Ø88mm OD (Part No: TC1279-458 – 2m long). The convoluted tube allows optical fibre cords to be dropped off from the duct to lower transmission equipment. The end cover snaps simply into the duct slots of a 90°, down elbow (Part No: TC1279-452A) and can be removed with a screwdriver should the system need extending.

## Technical Attributes:

- No joiner needed
- Clips straight into 10 mm duct end, or elbow down, 90° (Part No: TC1279-452A); available separately
- Accepts standard Ø75mm ID / Ø88mm OD, convoluted tube (Part No: TC1279-458); available separately.
- Tough, fire retardant material
- Purchase by the unit

## Technical Attributes:

<b>Dimensions</b>	110mm (W) x 42mm (H) x 104mm (D)
<b>Weight</b>	72g
<b>Materials</b>	Fire retardant plastic, Halogen free, UL94-VO rated