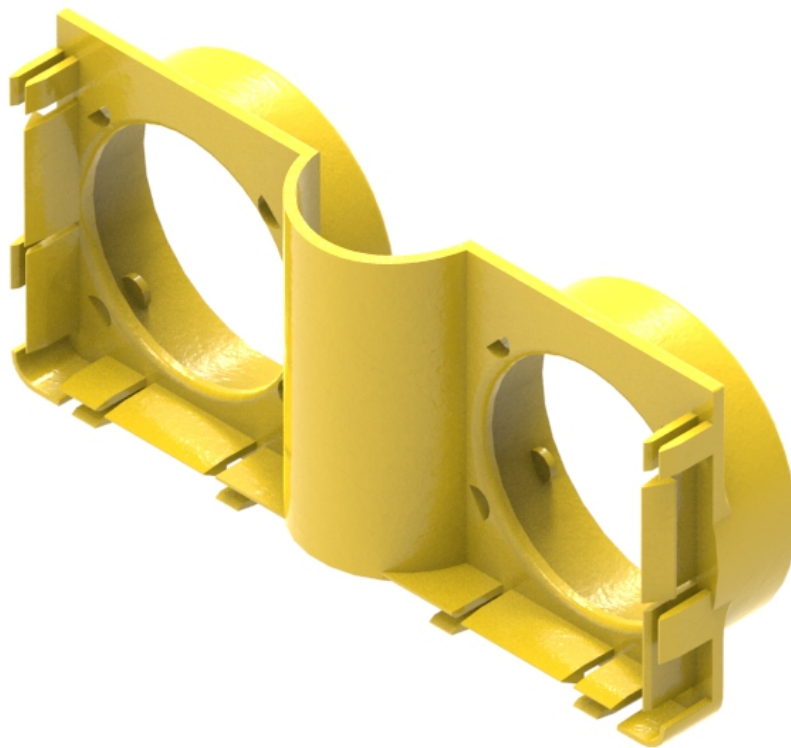


Part Number: **TC1279-457**
 Description: **END COVER, 220mm x 100mm DUCT,
 WITH 2 X Ø75mm ID / Ø88mm OD OUTLETS**



Use / Application:

The duct end cover is provided with two large size Ø holes and connection, that allows fitting of two large size convoluted, flexible tubes. The tubes are Ø75mm ID / Ø88mm OD (Part No: TC1279-458 – 2 metres long). The convoluted tube allows optical fibre cords to be dropped off from the 220mm X 100mm duct to lower transmission equipment. The end cover snaps simply into the duct slots of a 90°, down elbow (Part No: TC1279-454A) and can be removed with a screwdriver should the system need extending.

Technical Attributes:

- No joiner needed
- Clips straight into 220mm duct end or a 90°, down elbow (Part No: TC1279-454A); available separately
- Accepts standard 2 x Ø75mm ID / Ø88mm OD, convoluted tube (Part No: TC1279-458); available separately
- Tough, fire retardant material
- Purchase by the unit

Technical Attributes:

Dimensions	235mm (W) x 43mm (H) x 103mm (D)
Weight	118g
Materials	Fire retardant plastic, Halogen free, UL94-V0 rated