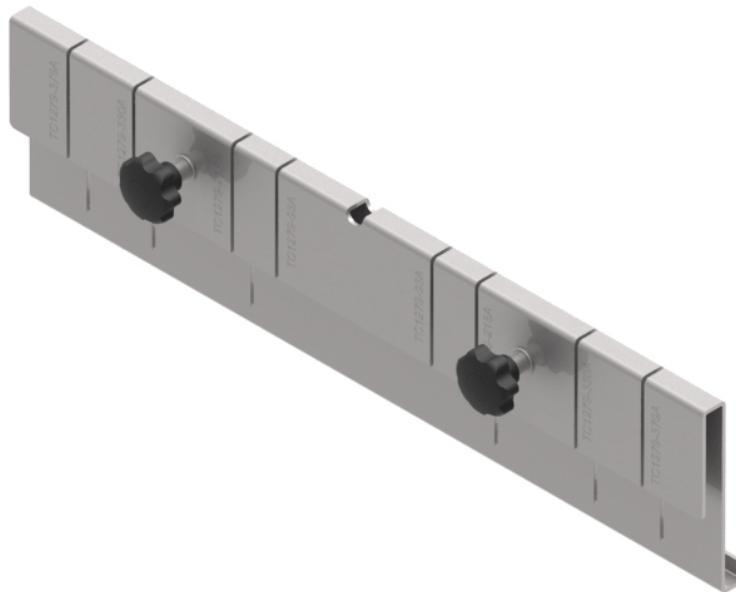


Part Number: **TC1279-483A**

Description: **CUT OUT JIG FOR DROP-OFF'S AND BREAK OUT GUIDES FOR 50mm x 50mm, 100mm x 50mm AND 100mm x 100mm, 220mm x 100mm AND 300mm x 100mm DUCT**



Note: Not to be used in loaded ducts, or near "live" optical fibre cords carrying optical traffic streams

Use / Application:

The Cut Out Jig is used to quickly and neatly prepare the side of a new duct length, to make a cut out for quickly installing a drop-off or a break-out guide (ie an outlet trumpet). The jig is centrally located about a centre mark on the top of the duct edge. It is clamped in position, and two quick cuts are made using a hand saw (Part No: 100 x 060 – available separately) to the full depth of the marked slots for the item to be installed. Next a Stanley knife is run (two or three times) along the bottom of the jigs straight edge, between saw cuts, to make a straight longitudinal cut in the ducts side. The Cut Out Jig is unclamped and removed from the duct, and the prepared piece of duct is removed using light finger pressure. The Stanley knife is used to clean the ducts edges, and the nominated item is quickly and simply fitted into the prepared cut out. The Cut Out Jig is used for:

Duct Size Item

50mm x 50mm	TC1279-93A
100mm x 50mm	TC1279-232A
100mm x 100mm	TC1279-218A
220mm x 100mm	TC1279-330A
300mm x 100mm	TC1279-379A

Note: Also used for making cut outs for TC1279-452A and TC1279-454A

Note that a slot for Part No: TC1279-93A can also be used with Part No's: TC1279-41KIT and TC1279-89, on all duct sizes.



Technical Attributes:

- Enables new duct sides to be quickly and easily prepared for fitting drop-offs or break-out guides (outlet trumpets)
- Purchase as a unit

Technical Attributes:

Dimensions	420mm (W) x 100mm (H) x 25mm (D)(+ nut 10mm & screw 30mm)
Weight	1.15kg
Materials	Stainless Steel