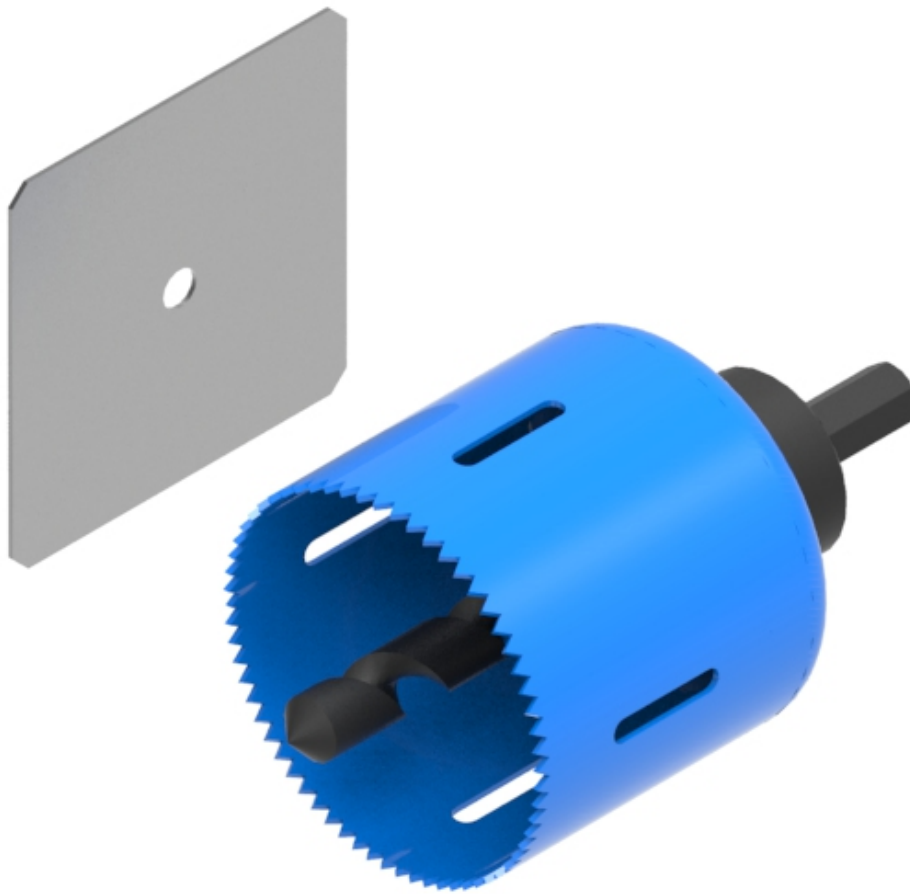


Part Number: **TC1279-604KIT**
 Description: **DUCT SPILL-OUT, INSTALLATION KIT, TEMPLATE AND Ø60mm HOLE SAW**



Use/Application:

This kit of two items is used to mark the central hole position, using the template, on the side of the duct and using a permanent marker pen. Then using the Ø60mm hole saw with Ø6.3mm guiding drill, a Ø60mm hole is cut into the side of the duct. Into the Ø60mm hole optic fibre cord side spill outs (ie Drop – Off's) can be fitted. These are: Straight Outlet set (Part No: TC1279-602A) or 900 Up/Down/Left/Right Outlet set (Part No: TC1279-609A). The spill out items are available separately. The spill outs connect to convoluted tube Ø44mm ID / Ø50mm OD, that can hold up to 80 x Ø2mm optical fibre cords. The convoluted tube is available separately. Part No TC1279-26Y – 1m long; Part No: TC1279-53Y – 2m long or Part No: TC1279-53Y20 – a 20m roll.

It is recommended that a hand brace and bit style tool, rather than a power tool, be used to cut the hole if it is cut in the overhead working position. An optical fibre cord protection unit (Part No: TC1279-50-3) should be used to protect installed optical fibre cords as the Ø60mm hole is cut. This item is available separately.



Benefits & Features:

- Template positioned on duct side and a permanent marker pen used to mark position of hole
- Hole then drilled through duct wall, then hole saw cuts a Ø60mm hole in duct side
- If optic fibre cords already in duct, use Part No: TC1279-50-3 to protect the cords
- This kit contains both the template (Part No: TC1279-604) and Ø60mm hole saw (Part No: TC1279-800)
- Purchase as a kit of two items

Technical Attributes:

Dimensions	Ø60mm x 114mm Long (Hole saw) 64mm (W) x 64mm (H) x 0.8mm (D) (Template)
Weight	423g (Hole saw)
Materials	HSS and steel
Colour	Various