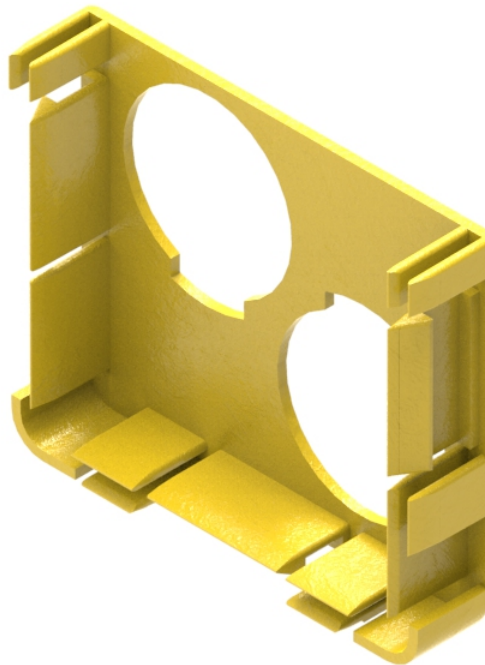


Part Number: **TC1279-57C**
 Description: **END COVER, 100mm DUCT,
 WITH TWO Ø46 mm, HOLES**



Use / Application:

This duct end cover fits onto the end of 100mm duct and provides two drop off feed points for optical fibre cords, to equipment below, using the two Ø46mm holes provided. The two Ø46mm holes house two Ø44mm ID/ Ø50mm OD flexible convoluted tube/s (Part No: TC1279-26, 1M long or TC1279-53, 2m long); or 2x split convoluted tubes Part No: TC1279-350, 1m long. The cover snaps simply into the duct slots and can be removed with a screwdriver, should the system need extending.

Benefits & Features:

- No joiner needed
- Clips straight into 100mm duct end
- Two Ø46mm diameter holes allow direct fitting of Ø44mm ID/ Ø50mm OD tube (Part No. TC1279-26), 1m long or
- TC1279-53, 2m long; or 2x split convoluted tubes (Part No: TC1279-350, 1m long); available separately
- Tough, fire retardant material
- Purchase by the unit

Technical Attributes:

Dimensions	25mm (W) x 95mm (H) x 112mm (D)
Weight	60g
Materials	Fire retardant plastic, Halogen free, UL94-VO rated



Product Guide