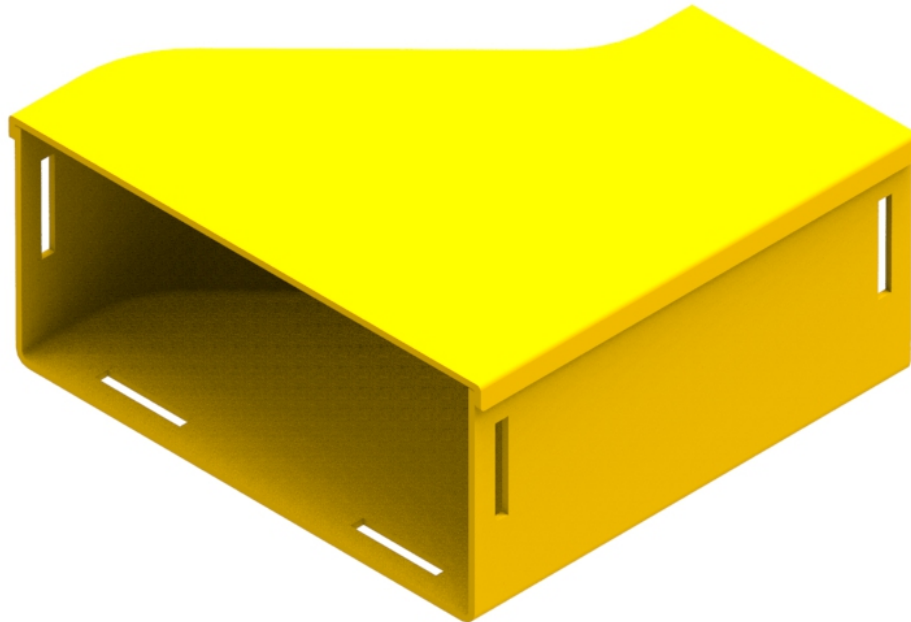




Part Number: **TC1279-05A**
Description: **RIGHT HAND ADAPTOR ASSEMBLY,
220mm – 100mm DUCT**



Use/Application:

The 220-100mm RH adaptor is used to provide a reducing connection between standard 220mm and 100mm straight ducting, or tee pieces. The adaptor requires standard joiners (Part No's: TC1279-25 & TC1279-27, Telstra No's: 035300515 & 035300514) at the 220mm & 100mm interfaces, which produces smooth & strong joints. Alternatively, slotless joiners (Part No's: TC1279-250A & TC1279-248A) can be used.

Benefits & Features:

- Includes cover (Part No: TC1279-06)
- Clips straight into joiners
- Tough, fire retardant material
- Joiners (Part No's: TC1279-25 & TC1279-27 or TC1279-250A & TC1279-248A), available separately
- Purchase by the unit

Technical Attributes:

Dimensions	215mm (W) x 105mm (H) x 233mm (D)
Weight	454g
Materials	Fire retardant plastic, Halogen free, UL94-V0 rated